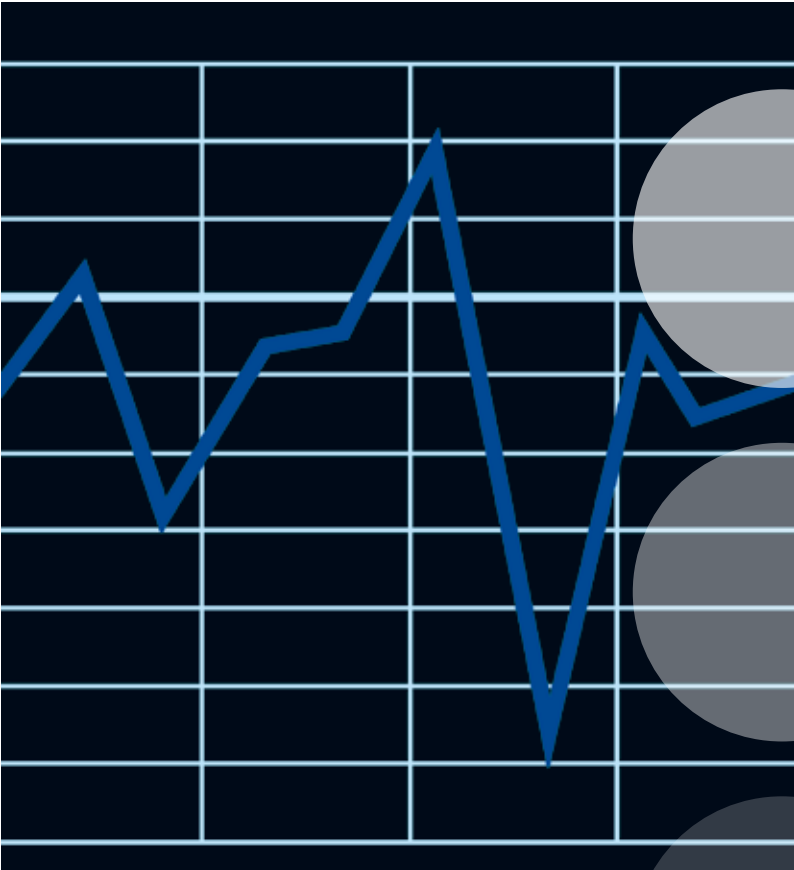




**DGUV**

Deutsche Gesetzliche  
Unfallversicherung  
Spitzenverband



## **DGUV Statistics 2017**

Figures and long-term trends



## DGUV Statistics 2017

Current figures and long-term trends relating to the industrial and the public sector accident insurers

# Table of contents

Notes on tables and figures ..... 6

## **Companies, hours worked, full time equivalent employees, schools and pupils**

Companies, hours worked and full time equivalent employees . 11

Institutions, insureds in statutory pupil accident insurance

Companies by size ..... 12

Full time equivalent employees/pupils ..... 14

## **Reportable accidents**

Reportable work-related accidents ..... 18

Reportable school-related accidents ..... 19

Rates of reportable work-related accidents ..... 20

Rates of reportable school-related accidents ..... 21

Reportable accidents at work by sector and BG ..... 22

Reportable accidents at school by region ..... 24

Reportable commuting accidents by sector and BG ..... 25

Reportable school commuting accidents by region ..... 27

## **New accident pensions**

Work-related accidents ..... 30

School-related accidents ..... 31

Rates of work-related accidents ..... 32

Rates of school-related accidents ..... 33

Accidents at work by sector and BG ..... 34

Accidents at school by region ..... 35

Commuting accidents by sector and BG ..... 37

School commuting accidents by region ..... 38

## **Fatal accidents**

Work-related accidents ..... 40

School-related accidents ..... 41

Accidents at work by sector and BG ..... 43

Commuting accidents by sector and BG ..... 44

School-related accidents by region ..... 45

## **Occupational diseases (OD)**

Occupational diseases as contained in the annex to the German ordinance on occupational diseases ..... 48

## **Imprint**

### **Published by:**

Deutsche Gesetzliche Unfallversicherung e.V. (DGUV)

Glinkastraße 40

10117 Berlin, Germany

Phone: +49 30 13001-0 (central office)

Fax: +49 30 13001-6132

E-Mail: [info@dguv.de](mailto:info@dguv.de)

Internet: [www.dguv.de/en](http://www.dguv.de/en)

### **Booklet produced by:**

Bonifatius GmbH, Druck · Buch · Verlag, Paderborn

Occupational diseases as contained in the appendix of the former GDR ordinance .....	54
Decided cases .....	56
Occupational diseases by subgroup of disease (Summary) ....	58
Occupational diseases according to former GDR ordinance ....	60
Notification of suspected cases of OD .....	62
Recognized cases of OD .....	64
New OD pensions.....	66
Fatalities due to OD .....	68
Notification of suspected cases of OD by BG.....	70
Recognized OD by BG .....	71
New OD pensions by BG .....	72
Long-term trends in OD .....	73

<b>Stock of pensions</b> .....	76
--------------------------------	----

### Contribution

Remuneration level used as basis for calculating contribution in the industrial sector .....	78
Apportionment quota required of member companies in the industrial sector.....	79
Contribution quota required of member municipalities and affiliated companies in the public sector .....	80

### Expenditure

Compensation .....	81
Curative treatment.....	82
Pensions .....	83
Prevention .....	85

### Prevention

Staff in the section of prevention.....	87
Selected activities in the section of prevention.....	88
Consulting initiated by companies and insured persons .....	89
Occupational health and safety training seminars .....	90
Participants in occupational health and safety training seminars .....	91
Staff with responsibility for safety at work .....	92

### Figures

Fig. 1: Hours worked .....	13
Fig. 2: Full time equivalent employees/pupils .....	13
Fig. 3: Member companies/schools .....	15
Fig. 4: Full time equivalent employees by company size .....	15
Fig. 5: Reportable workplace accidents by company size .... per 1,000 full time equivalent employees	17
Fig. 6: Reportable accidents at work and school .....	28
per 1,000 full time equivalent employees and pupils	
Fig. 7: Reportable work- and school-related commuting .... accidents per 1,000 (weighted) insurance relationships and pupils	28
Fig. 8: Accidents at work and school per 1,000 full time equivalent employees and pupils - new pensions ....	29
Fig. 9: Work -and school-related commuting accidents per 1,000 (weighted) insurance relationships and pupils - new pensions .....	29
Fig. 10: Fatal work- and school-related accidents.....	46
Fig. 11: Suspected cases of occupational disease.....	74
Fig. 12: Recognized cases of OD .....	74
Fig. 13: New OD pensions.....	75
Fig. 14: Pensions.....	77
Fig. 15: Pensions.....	77
Fig. 16: Expenditure on prevention.....	86
Fig. 17: Expenditure on compensation.....	86

# Notes on tables and figures

## General remarks

In Germany, the Gewerbliche Berufsgenossenschaften (BGs) and the Unfallversicherungsträger der öffentlichen Hand (UVTöH) are the institutions for statutory accident insurance and prevention for the industrial (BGs) and public (UVTöH) sector. The Deutsche Gesetzliche Unfallversicherung (German Statutory Accident Insurance, DGUV) was founded by the BGs and UVTöH in 2007 to support their common objectives and to serve their mutual interest.

Since 1969, the former central federation of the BGs, the HVBG, has published annually a booklet under the title “Arbeitsunfallstatistik für die Praxis” containing figures and long-term trends from the BG. The scope of data compiled has been extended several times over this period. Considering this development, the German title of the brochure has been changed to “BG-Statistiken für die Praxis” in 1992. Since 1993, an English translation of the brochure has been published every year, responding to the growing interest shown in these figures abroad. Following the merger into DGUV in 2007, the statistical information of the industrial (BGs) and public (UVTöH) sector were brought together.

The material has been compiled using the many years of experience gained in dealing with requests for statistical data from the BG and the UVTöH. First, the booklet contains information on the number of member companies, hours worked and persons insured. Furthermore, data on reportable and fatal accidents at work (including day care and school) and on the way to and from work as well as new accident pensions are given. A list of all occupational diseases (OD) is included as well as the number of notifications of a suspected case of OD, the recognized OD cases, new OD pensions and a summary of all OD cases a decision was taken on in the year under review. Finally, data on the number of pensions, the apportionment quota required of member companies, the expenditure of the BG and the UVTöH including that for accident prevention, curative treatment and pensions are provided, together with selected information on the BGs and UVTöH work in the field of accident prevention and worker protection.

The time-series normally begins in 1987 when in some areas the statistical basis used in accident insurance has been changed.

## Inclusion of the new federal states in eastern Germany

Since January 1, 1991, the BG and UVTöH have also been responsible for the new federal states in eastern Germany. Therefore these have been included in the data since 1991. For that reason it is not possible to make any direct comparison between the figures for these years and figures for previous years. This applies in particular to the frequency of new pensions awarded due to ill health: Pensions are only granted when all attempts have been made to rehabilitate the person concerned; hence in particularly serious cases in which the person is hospitalised for a long time or spends a long time in vocational retraining, a long period may elapse between the accident occurring and compensation being received. In 1991 and 1992, those cases have not been compensated by cases from preceding years, leading to an artificial decrease of new pension rates in these years. Since 1993, the rates are again reflecting the actual risks.

In addition to this, the former GDR law on occupational diseases with its own list of recognized diseases continued to apply in the new federal states until the end of 1991. Even after 1991, cases of occupational disease listed under former GDR law may still be recognized, as long as the insured event took place before January 1, 1992, and notification of the suspected case of the disease was made before the end of 1993.

## Introduction of the European Single Currency Euro

Since introduction of the Euro on January 1, 2002, all monetary figures have been reported in Euro. To facilitate a comparison with the previous years, the figures before 2002 have been converted in €, the conversion being based on the factor 1.95583 DM for 1 €.

## Mergers

On June 1, 2007, the BGs and the UVTöH merged their umbrella associations – the registered associations HVBG and BUK, the former central federation of the UVTöH, – to the Deutsche Gesetzliche Unfallversicherung.

In addition, a large number of mergers took place between the individual institutions for statutory accident insurance since the

turn of the century. The figures shown always represent the current situation at the time of the most recent reporting year for the previous years, too.

### **Data revision**

On the basis of a revision of the data base, there may be some slight differences between previous publications and publications from the year 2016 onwards.

### **Definition of terms**

**Berufsgenossenschaften (BGs):** Institutions for statutory accident insurance and prevention for the industrial sector.

**Unfallversicherungsträger der öffentlichen Hand (UVTöH):** Institutions for statutory accident insurance and prevention for the public sector.

### **Reportable accidents:**

– Accidents at work or on the way to or from work (commuting accidents) which are either fatal or lead to an incapacity to work for more than three days.

– Accidents at school<sup>1</sup> or on the way to or from school which are either fatal or lead to medical attention.

### **New occupational accident pensions / new commuting accident**

**pensions:** Accidents at work or commuting accidents for which compensation was paid for the first time in the year under review either in the form of a pension, a lump-sum or a death grant.

### **Notification of a suspected case of occupational disease:**

Any notification of a suspected case of occupational disease received by the BG or UVTöH from insured persons, health insurance funds, companies or other sources, regardless of whether or not the suspicion proves justified.

### **Recognized occupational diseases:**

Of all reports of suspected occupational disease, all those cases in which it has been proved in an adjudication procedure that the person is indeed suffering from the occupational disease.

For some diseases, the confirmation of the occupational causation must coincide with additional insurance conditions, e.g. some diseases must have forced the person to refrain from all activities which led or could lead to the development, aggravation or recurrence of the illness. If such conditions are not fulfilled, a formal OD recognition is not possible. Nevertheless, extensive benefits for prevention, curative treatment and vocational help are often granted in these cases.

**New occupational disease pensions:** Those cases of recognized occupational disease for which the insurance requirements for compensation in the form of a pension or a death grant were established for the first time in the year under review.

**Full time equivalent employees (FTE):** Factor used in calculating the incidence of work-related accidents. A full time equivalent employee (FTE) is defined in relation to the average annual number of actual working hours for a full time employee in industry and in services sectors and is therefore a reflection of the period of exposure to the risk of accidents at work.

**Insurance relationship:** Any relationship between an insurer and an insured person based on legal ordinance, bearing in mind that one person may have multiple insurance relationships; used as a basis for calculating the frequency of commuting accidents since every insured activity also entails the risk of a commuting accident.

**Apportionment quota:** Surplus of the outgoings of the Berufsgenossenschaften over their incomings which, at the end of the year under review, is divided between the industrial companies.

**Contribution quota:** Surplus of the outgoings of the public sector accident insurers over their incomings which is shared among the insured municipality and affiliated companies following the budget plan before the year under review.

---

<sup>1</sup> The statutory pupil accident insurance covers all children and adolescents from nursery school through university during their time at school and day care, including their way to and from school.

Table 1:

**Companies, hours worked and full time equivalent employees**

**Compensation:** All cash and non-cash benefits to those who have been injured or have become ill or to surviving dependents.

**Expenditure on prevention:** These are the costs for administration and coordination. The members of the professional associations themselves are obliged by law to carry out accident prevention in their business. No statistics are compiled on their expenditure but it is without doubt many times greater than the expenditure of the professional associations recorded here.

Year	Companies <sup>1</sup>	Hours worked in 1,000	Full time equivalent employees	FTE guideline figure <sup>2</sup>
1987	2,313,818	43,312,231	26,735,947	1,620
1988	2,339,865	44,279,552	27,294,164	1,620
1989	2,384,782	44,978,295	27,929,444	1,610
1990	2,443,363	45,999,442	28,929,493	1,590
1991	2,717,863	55,478,665	34,891,275	1,590
1992	2,851,798	56,998,130	35,256,354	1,620
1993	2,948,708	54,044,726	34,842,251	1,570
1994	3,013,134	54,463,880	34,755,066	1,570
1995	3,132,124	55,933,957	35,458,516	1,570
1996	3,177,649	55,950,166	36,340,343	1,520
1997	3,263,723	55,339,481	35,946,365	1,530
1998	3,326,795	55,195,601	35,453,589	1,550
1999	3,346,331	55,712,781	35,712,028	1,560
2000	3,392,402	55,071,511	35,759,390	1,540
2001	3,383,339	54,390,728	35,549,496	1,530
2002	3,379,854	53,188,970	34,764,031	1,530
2003	3,407,108	52,643,804	34,407,718	1,530
2004	3,523,000	55,276,837	34,985,339	1,580
2005	3,614,349	54,031,845	34,415,187	1,570
2006	3,475,002	55,616,874	35,200,557	1,580
2007	3,464,587	56,908,994	35,791,823	1,590
2008	3,504,709	58,377,951	36,259,598	1,610
2009	3,669,406	57,246,629	36,462,823	1,570
2010	3,806,367	59,105,870	36,941,169	1,600
2011	3,734,454	59,586,190	37,475,591	1,590
2012	3,726,475	59,972,074	37,957,013	1,580
2013	3,775,721	60,254,613	38,873,944	1,550
2014	3,861,340	60,934,232	39,060,408	1,560
2015	3,895,441	61,861,231	39,402,061	1,570
2016	3,875,908	62,909,624	40,069,831	1,570
2017	3,914,687	64,385,119	41,272,482	1,560

<sup>1</sup> Companies, private households and assistance companies

<sup>2</sup> For definition see note on p. 9

Table 1a:

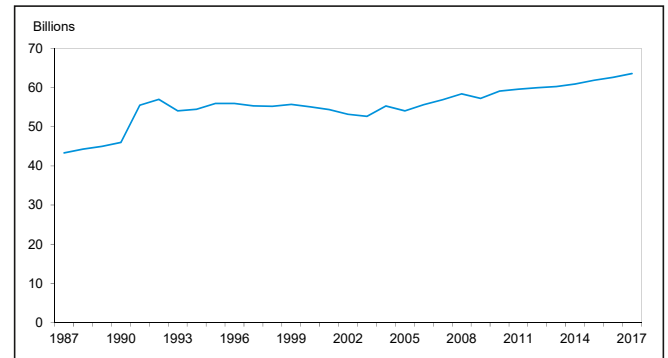
**Institutions, insureds in statutory pupil accident insurance**

Year	Educational institutions <sup>1</sup>	Insureds <sup>2</sup>
1987	57,622	12,136,518
1988	57,676	11,989,188
1989	57,864	11,908,904
1990	58,155	11,956,684
1991	67,342	14,878,096
1992	76,363	15,844,198
1993	80,158	16,153,547
1994	80,871	16,336,970
1995	82,066	16,452,524
1996	83,099	16,809,262
1997	98,049	17,539,932
1998	99,975	17,659,188
1999	100,354	17,583,620
2000	94,048	17,363,208
2001	91,112	17,444,431
2002	93,230	17,479,762
2003	94,898	17,443,636
2004	89,054	17,416,479
2005	87,795	17,373,585
2006	120,260	17,399,085
2007	120,019	17,268,114
2008	126,771	17,058,553
2009	131,026	17,072,402
2010	136,766	17,122,852
2011	140,512	17,071,776
2012	139,970	17,150,120
2013	140,891	17,155,415
2014	142,104	17,112,531
2015	142,271	17,170,607
2016	143,560	17,327,432
2017	144,280	17,507,145

<sup>1</sup> Including day care facilities

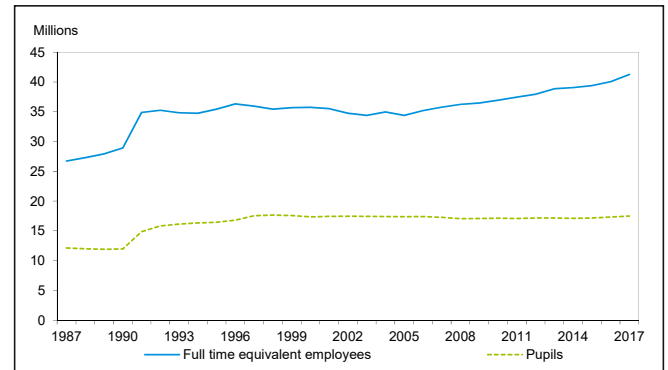
<sup>2</sup> Pupils from nursery school (including day care) through university

Figure 1:  
**Hours worked\***



\* Excluding day care and school

Figure 2:  
**Full time equivalent employees/pupils\***



\* Children and adolescents from nursery school through university



Table 2:

**Companies<sup>1</sup> by size in 2017**

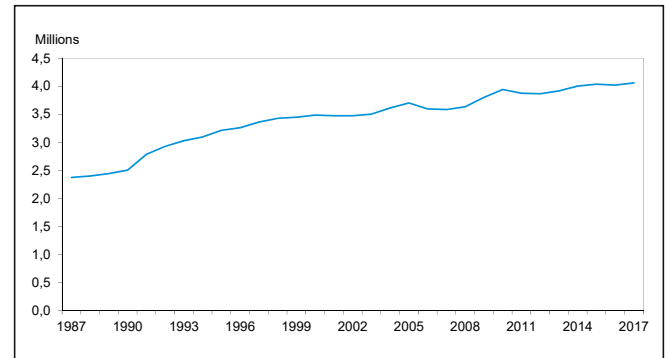
	Number of companies with ... FTE					All companies <sup>2</sup>
	up to 9	10 to 49	50 to 249	250 to 499	500 or more	
<b>Accident insurance in industrial sector</b>	<b>2,925,387</b>	<b>341,057</b>	<b>71,402</b>	<b>9,218</b>	<b>6,933</b>	<b>3,358,553</b>
101 BG for the raw materials and chemical industry	21,349	5,653	2,834	542	389	30,767
102 BG for the wood-working and metal-working industries	172,611	38,368	9,908	1,373	883	223,143
103 BG for the energy, textile, electrical and media products sectors	177,811	24,314	7,056	1,174	718	211,073
104 BG for the building trade	253,257	32,040	4,016	324	199	289,836
105 BG for the foodstuffs and catering industry	207,612	30,050	4,886	518	305	243,371
106 BG for the trade and logistics industry	319,934	41,864	9,834	1,024	1,034	373,690
107 BG for the Transport industry, postal logistics and telecommunications	171,224	19,749	3,809	303	202	196,000
108 BG for the administrative sector	1,027,141	100,240	19,501	2,680	2,020	1,151,582
109 BG for the health and welfare services	574,448	48,779	9,558	1,280	1,183	639,091
<b>Accident insurance in public sector (General AI<sup>3</sup>)</b>	<b>9,220</b>	<b>7,896</b>	<b>4,798</b>	<b>1,170</b>	<b>1,226</b>	<b>24,319</b>
<b>Total</b>	<b>2,934,607</b>	<b>348,953</b>	<b>76,200</b>	<b>10,388</b>	<b>8,159</b>	<b>3,382,872</b>

<sup>1</sup> Without private households and assistance companies

<sup>2</sup> In some cases the size of companies was not available. So summing up does not always coincide with the column

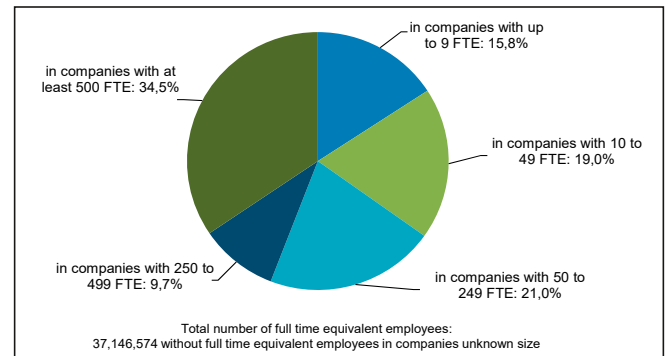
<sup>3</sup> General AI (General Accident Insurance): Public Sector accident insurance without pupil accident insurance

**Figure 3:  
Companies\***



\* Companies, private households, assistance companies and schools (including day care)

**Figure 4:  
Full time equivalent employees\* by company size 2017**



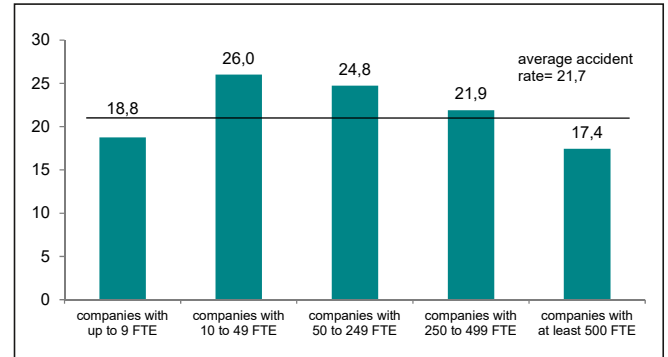
\* Full time equivalent employees (only for dependent employees, employers and non-professional construction workers)

Table 3:

**Full time equivalent employees/pupils**

	2005	2010	2015	2016	2017
<b>Accident insurance in industrial sector</b>	<b>29,706,299</b>	<b>32,049,142</b>	<b>34,406,081</b>	<b>34,945,205</b>	<b>36,012,390</b>
101 BG for the raw materials and chemical industry	1,239,124	1,179,281	1,212,459	1,224,642	1,246,379
102 BG for the wood-working and metal-working industries	3,958,779	3,844,841	4,089,069	3,995,297	4,238,191
103 BG for the energy, textile, electrical and media products sectors	3,141,625	2,893,902	3,066,041	3,055,280	3,055,085
104 BG for the building trade	1,846,606	1,769,325	1,844,284	1,895,711	1,934,150
105 BG for the foodstuffs and catering industry	1,892,250	1,817,047	1,937,151	1,982,669	2,030,301
106 BG for the trade and logistics industry	3,698,166	3,739,645	4,488,496	4,573,506	4,586,427
107 BG for the Transport industry, postal logistics and telecommunications	1,603,974	1,669,824	1,643,065	1,662,718	1,706,056
108 BG for the administrative sector	8,876,661	11,047,870	11,594,383	11,839,888	12,282,261
109 BG for the health and welfare services	3,449,114	4,087,407	4,531,133	4,715,494	4,933,540
<b>Accident insurance in public sector (General AI)</b>	<b>4,708,888</b>	<b>4,892,027</b>	<b>4,995,980</b>	<b>5,124,626</b>	<b>5,260,092</b>
<b>Total</b>	<b>34,415,187</b>	<b>36,941,169</b>	<b>39,402,061</b>	<b>40,069,828</b>	<b>41,272,482</b>
<b>Pupil accident insurance Pupils</b>	<b>17,373,585</b>	<b>17,122,852</b>	<b>17,170,607</b>	<b>17,327,432</b>	<b>17,507,145</b>

Figure 5:  
**Reportable occupational accidents at the workplace\* per 1,000 FTE in 2016 by company size**



\* In this case only occupational accidents at the workplace are included, since these are the only types of accident where a comparison of company size is informative. The average accident rate is therefore not identical to the accident rate shown in table 5.

Table 4:

**Reportable work-related accidents  
– absolute figures –**

Year	Accidents at work	Commuting accidents	Total
1987	1,384,564	183,611	1,568,175
1988	1,403,458	172,000	1,575,458
1989	1,430,279	171,127	1,601,406
1990	1,495,569	185,257	1,680,826
1991	1,817,711	240,819	2,058,530
1992	1,874,713	258,100	2,132,813
1993	1,747,574	261,528	2,009,102
1994	1,727,095	242,729	1,969,824
1995	1,651,481	264,584	1,916,065
1996	1,504,436	255,837	1,760,273
1997	1,453,100	235,983	1,689,083
1998	1,443,401	245,740	1,689,141
1999	1,421,757	244,335	1,666,092
2000	1,380,289	231,332	1,611,621
2001	1,273,478	230,336	1,503,814
2002	1,187,694	219,897	1,407,591
2003	1,032,997	199,703	1,232,700
2004	985,410	188,253	1,173,663
2005	931,932	185,146	1,117,078
2006	948,546	191,186	1,139,732
2007	959,714	167,067	1,126,781
2008	971,620	176,608	1,148,228
2009	886,122	178,590	1,064,712
2010	954,459	223,973	1,178,432
2011	919,025	188,452	1,107,477
2012	885,009	176,356	1,061,365
2013	874,514	185,667	1,060,181
2014	869,817	174,240	1,044,057
2015	866,056	179,181	1,045,237
2016	877,071	186,070	1,063,141
2017	873,522	190,968	1,064,490

Table 4a:

**Reportable school-related accidents  
– absolute figures –**

Year	Accidents at school	School commuting accidents	Total
1987	897,810	94,137	991,947
1988	902,057	92,292	994,349
1989	884,182	89,036	973,218
1990	879,163	90,298	969,461
1991	977,129	105,920	1,083,049
1992	1,217,928	118,379	1,336,307
1993	1,289,485	126,619	1,416,104
1994	1,343,003	125,425	1,468,428
1995	1,338,643	135,707	1,474,350
1996	1,369,534	141,575	1,511,109
1997	1,439,713	148,258	1,587,971
1998	1,481,248	151,970	1,633,218
1999	1,512,084	151,280	1,663,364
2000	1,463,423	140,275	1,603,698
2001	1,441,817	141,995	1,583,812
2002	1,425,909	139,653	1,565,562
2003	1,361,305	140,254	1,501,559
2004	1,328,808	127,768	1,456,576
2005	1,290,782	124,650	1,415,432
2006	1,279,771	124,824	1,404,595
2007	1,282,464	114,510	1,396,974
2008	1,332,424	118,563	1,450,987
2009	1,250,552	115,534	1,366,086
2010	1,307,348	124,572	1,431,920
2011	1,293,653	114,157	1,407,810
2012	1,229,546	110,908	1,340,454
2013	1,212,563	112,225	1,324,788
2014	1,283,506	109,992	1,393,498
2015	1,244,577	110,200	1,354,777
2016	1,241,139	111,216	1,352,355
2017	1,212,550	109,375	1,321,925

Table 5:

**Reportable work-related accidents  
– per 1,000 FTE/weighted insurance relationships –**

Year	Accidents at work		Commuting accidents per 1,000 weighted insurance relationships
	Per 1,000 full time equivalent employees	Per one million manhours	
1987	51.79	31.97	6.59
1988	51.42	31.70	5.90
1989	51.21	31.80	5.71
1990	51.70	32.51	5.97
1991	52.10	32.76	6.01
1992	53.17	32.89	6.37
1993	50.16	32.34	6.61
1994	49.69	31.71	6.18
1995	46.58	29.53	6.60
1996	41.40	26.89	6.43
1997	40.42	26.26	5.89
1998	40.71	26.15	6.19
1999	39.81	25.52	6.08
2000	38.60	25.06	5.73
2001	35.82	23.41	5.75
2002	34.16	22.33	5.60
2003	30.02	19.62	5.16
2004	28.17	17.83	4.86
2005	27.08	17.25	4.73
2006	26.95	17.06	4.78
2007	26.81	16.86	4.05
2008	26.80	16.64	4.23
2009	24.30	15.48	4.24
2010	25.84	16.15	5.25
2011	24.52	15.42	4.34
2012	23.32	14.76	3.93
2013	22.50	14.51	4.08
2014	22.27	14.27	3.75
2015	21.98	14.00	3.78
2016	21.89	13.94	3.85
2017	21.16	13.57	3.86

Table 5a:

**Reportable school-related accidents  
– per 1,000 pupils –**

Year	Accidents at school  per 1,000 pupils	School commuting accidents  per 1,000 pupils	All accidents  per 1,000 pupils
1987	73.98	7.76	81.73
1988	75.24	7.70	82.94
1989	74.25	7.48	81.72
1990	73.53	7.55	81.08
1991	65.68	7.12	72.79
1992	76.87	7.47	84.34
1993	79.83	7.84	87.67
1994	82.21	7.68	89.88
1995	81.36	8.25	89.61
1996	81.47	8.42	89.90
1997	82.08	8.45	90.53
1998	83.88	8.61	92.49
1999	85.99	8.60	94.60
2000	84.28	8.08	92.36
2001	82.65	8.14	90.79
2002	81.57	7.99	89.56
2003	78.04	8.04	86.08
2004	76.30	7.34	83.63
2005	74.30	7.17	81.47
2006	73.55	7.17	80.73
2007	74.27	6.63	80.90
2008	78.11	6.95	85.06
2009	73.25	6.77	80.02
2010	76.35	7.28	83.63
2011	75.78	6.69	82.46
2012	71.69	6.47	78.16
2013	70.68	6.54	77.22
2014	75.00	6.43	81.43
2015	72.48	6.42	78.90
2016	71.63	6.42	78.05
2017	69.26	6.25	75.51

Table 6:

**Reportable accidents at work by sector and BG**  
**– absolute figures –**

	2005	2010	2015	2016	2017
<b>Accident insurance in industrial sector</b>	<b>810,637</b>	<b>852,532</b>	<b>791,319</b>	<b>802,016</b>	<b>799,883</b>
101 BG for the raw materials and chemical industry	25,302	22,689	22,234	22,480	22,564
102 BG for the wood-working and metal-working industries	172,662	163,864	151,179	148,512	146,592
103 BG for the energy, textile, electrical and media products sectors	57,733	63,206	56,135	56,183	55,404
104 BG for the building trade	123,647	117,736	102,333	104,820	103,755
105 BG for the foodstuffs and catering industry	92,080	72,921	67,622	67,821	67,672
106 BG for the trade and logistics industry	90,615	100,417	102,766	104,722	105,852
107 BG for the Transport industry, postal logistics and telecommunications	64,375	72,679	69,935	71,986	73,302
108 BG for the administrative sector	139,240	174,779	147,156	148,551	147,376
109 BG for the health and welfare services	44,983	64,241	71,959	76,941	77,366
<b>Accident insurance in public sector (General AI)</b>	<b>121,295</b>	<b>101,927</b>	<b>74,737</b>	<b>75,055</b>	<b>73,639</b>
<b>Total</b>	<b>931,932</b>	<b>954,459</b>	<b>866,056</b>	<b>877,071</b>	<b>873,522</b>
<b>Pupil accident insurance</b>					
<i>Reportable accidents at school</i>	1,290,782	1,307,348	1,244,577	1,241,139	1,212,550

Table 7:

**Reportable accidents at work by sector and BG**  
**– per 1,000 FTE/pupils –**

	2005	2010	2015	2016	2017
<b>Accident insurance in industrial sector</b>	<b>27.29</b>	<b>26.60</b>	<b>23.00</b>	<b>22.95</b>	<b>22.21</b>
101 BG for the raw materials and chemical industry	20.42	19.24	18.34	18.36	18.10
102 BG for the wood-working and metal-working industries	43.61	42.62	36.97	37.17	34.59
103 BG for the energy, textile, electrical and media products sectors	18.38	21.84	18.31	18.39	18.14
104 BG for the building trade	66.96	66.54	55.49	55.29	53.64
105 BG for the foodstuffs and catering industry	48.66	40.13	34.91	34.21	33.33
106 BG for the trade and logistics industry	24.50	26.85	22.90	22.90	23.08
107 BG for the Transport industry, postal logistics and telecommunications	40.13	43.52	42.56	43.29	42.97
108 BG for the administrative sector	15.69	15.82	12.69	12.55	12.00
109 BG for the health and welfare services	13.04	15.72	15.88	16.32	15.68
<b>Accident insurance in public sector (General AI)</b>	<b>25.76</b>	<b>20.84</b>	<b>14.96</b>	<b>14.65</b>	<b>14.00</b>
<b>Total</b>	<b>27.08</b>	<b>25.84</b>	<b>21.98</b>	<b>21.89</b>	<b>21.16</b>
<b>Pupil accident insurance</b>					
<i>Reportable accidents at school per 1,000 pupils</i>	74.30	76.35	72.48	71.63	69.26

Table 7a:

**Reportable accidents at school by region  
– per 1,000 pupils –**

	2005	2010	2015	2016	2017
Baden–Württemberg	68.91	70.66	63.22	63.00	59.77
Bavaria	59.31	61.27	64.61	63.74	63.78
Berlin	88.03	85.93	83.90	82.61	80.67
Brandenburg	91.09	88.47	83.42	81.09	76.78
Bremen	77.75	78.78	66.78	67.46	65.38
Hamburg/ Schleswig-Holstein <sup>1</sup>	83.26	78.92	81.02	79.87	76.03
Hesse	63.00	65.16	61.07	61.39	57.80
Mecklenburg- Vorpommern	84.22	89.50	89.48	88.67	83.34
Lower Saxony	86.35	82.55	83.17	85.23	78.38
North Rhine-Westphalia	75.70	85.71	73.00	71.68	69.40
Rhineland-Palatinate	76.53	69.84	69.53	65.27	63.81
Saarland	78.53	78.88	69.01	69.45	68.25
Saxony	71.32	74.93	79.23	77.88	76.03
Saxony-Anhalt	81.94	86.19	74.68	67.60	77.50
Thuringia	87.93	87.90	93.71	92.31	91.23
<b>Total</b>	<b>74.30</b>	<b>76.35</b>	<b>72.48</b>	<b>71.63</b>	<b>69.26</b>

<sup>1</sup> Public sector accident insurance institution spanning two Länder

Table 8:

**Reportable commuting accidents by sector and BG  
– absolute figures –**

	2005	2010	2015	2016	2017
<b>Accident insurance in industrial sector</b>	<b>153,685</b>	<b>191,693</b>	<b>153,980</b>	<b>159,502</b>	<b>164,190</b>
101 BG for the raw materials and chemical industry	5,837	6,161	5,662	5,850	6,009
102 BG for the wood-working and metal-working industries	21,580	22,217	19,383	19,692	20,536
103 BG for the energy, textile, electrical and media products sectors	13,355	15,023	12,669	13,018	13,150
104 BG for the building trade	10,225	11,738	8,740	8,833	8,876
105 BG for the foodstuffs and catering industry	13,872	14,321	10,967	11,096	11,403
106 BG for the trade and logistics industry	20,626	25,308	22,159	22,575	22,953
107 BG for the Transport industry, postal logistics and telecommunications	7,301	8,786	7,177	7,763	7,970
108 BG for the administrative sector	38,148	53,230	36,984	38,144	39,227
109 BG for the health and welfare services	22,741	34,909	30,239	32,531	34,066
<b>Accident insurance in public sector (General AI)</b>	<b>31,461</b>	<b>32,280</b>	<b>25,201</b>	<b>26,568</b>	<b>26,778</b>
<b>Total</b>	<b>185,146</b>	<b>223,973</b>	<b>179,181</b>	<b>186,070</b>	<b>190,968</b>
<b>Pupil accident insurance</b> <i>Reportable school commuting accidents</i>	<i>124,650</i>	<i>124,572</i>	<i>110,200</i>	<i>111,216</i>	<i>109,375</i>

Table 9:

**Reportable commuting accidents by sector and BG  
– per 1,000 weighted insurance relationships/pupils –**

	2005	2010	2015	2016	2017
<b>Accident insurance in industrial sector</b>	<b>4.51</b>	<b>5.13</b>	<b>3.75</b>	<b>3.82</b>	<b>3.83</b>
101 BG for the raw materials and chemical industry	4.56	5.02	4.01	4.07	4.02
102 BG for the wood-working and metalworking industries	5.24	5.20	4.09	4.12	4.20
103 BG for the energy, textile, electrical and media products sectors	3.92	4.12	3.28	3.42	3.41
104 BG for the building trade	3.84	4.41	3.18	3.12	3.09
105 BG for the foodstuffs and catering industry	4.19	4.30	3.03	2.99	3.01
106 BG for the trade and logistics industry	4.93	6.03	4.12	4.11	4.16
107 BG for the Transport industry, postal logistics and telecommunications	4.46	5.16	4.28	4.57	4.58
108 BG for the administrative sector	4.64	5.29	3.52	3.55	3.50
109 BG for the health and welfare services	4.36	5.60	4.27	4.49	4.57
<b>Accident insurance in public sector (General AI)</b>	<b>6.18</b>	<b>6.01</b>	<b>3.99</b>	<b>4.07</b>	<b>4.01</b>
<b>Total</b>	<b>4.73</b>	<b>5.25</b>	<b>3.78</b>	<b>3.85</b>	<b>3.86</b>
<b>Pupil accident insurance</b> <i>Reportable school commuting accidents per 1.000 pupils</i>	<i>7.17</i>	<i>7.28</i>	<i>6.42</i>	<i>6.42</i>	<i>6.25</i>

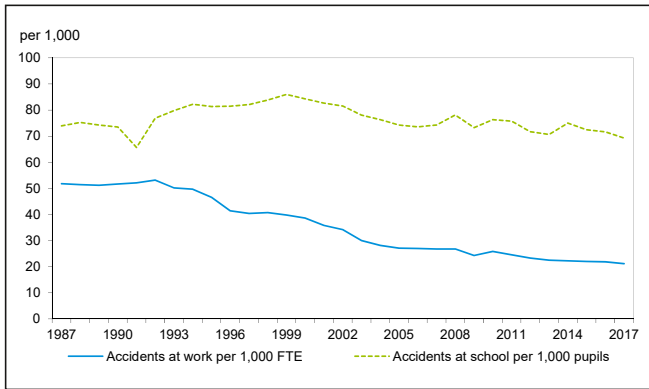
Table 9a:

**Reportable school commuting accidents by region  
– per 1,000 pupils –**

	2005	2010	2015	2016	2017
Baden–Württemberg	5.99	6.14	6.19	5.97	6.01
Bavaria	7.22	7.79	7.07	6.69	7.13
Berlin	5.79	5.79	4.93	5.34	4.82
Brandenburg	9.28	7.81	5.84	6.62	6.07
Bremen	8.55	8.42	5.84	5.70	5.65
Hamburg/ Schleswig-Holstein <sup>1</sup>	7.79	8.38	6.47	6.46	5.50
Hesse	5.24	5.48	4.45	4.34	4.15
Mecklenburg- Vorpommern	8.25	6.61	6.39	6.78	6.70
Lower Saxony	8.88	10.24	9.73	10.37	9.24
North Rhine-Westphalia	7.05	7.13	6.18	6.15	5.84
Rhineland-Palatinate	6.69	5.86	6.05	5.42	5.55
Saarland	8.35	8.16	5.48	6.04	4.95
Saxony	7.96	7.14	5.88	6.20	6.57
Saxony-Anhalt	8.56	7.82	5.19	5.03	6.01
Thuringia	8.30	7.18	6.65	6.61	7.20
<b>Total</b>	<b>7.17</b>	<b>7.28</b>	<b>6.42</b>	<b>6.42</b>	<b>6.25</b>

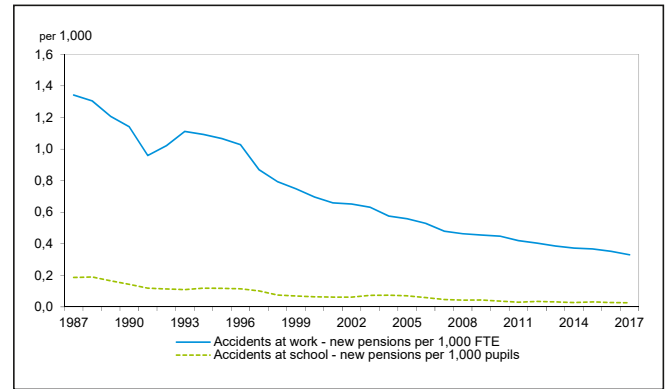
<sup>1</sup> Public sector accident insurance institution spanning two Länder

Figure 6:  
Reportable accidents at work<sup>1</sup> and school<sup>2</sup>



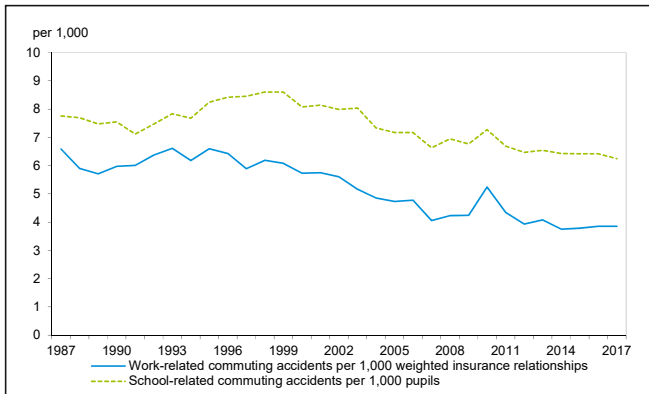
<sup>1</sup> Accidents at work which are either fatal or lead to an incapacity to work for more than three days  
<sup>2</sup> Accidents at school (including day care) which are either fatal or lead to medical attention

Figure 8:  
Accidents at work and school – new pensions



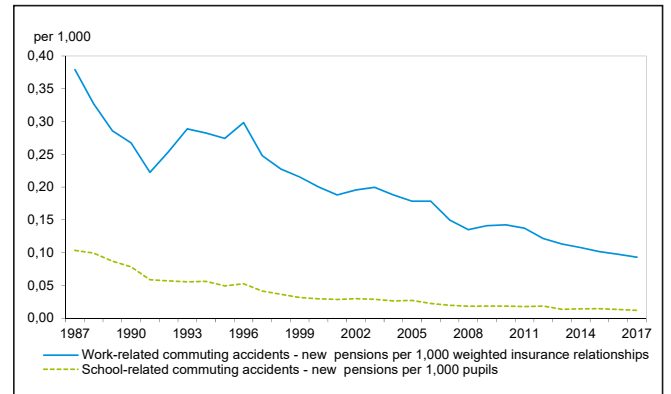
\* With the introduction of SGB VII (1997), the pension criteria has changed; the minimum time period for limited earning capacity has extended from 13 to 26 weeks until monetary compensation was paid.

Figure 7:  
Reportable work<sup>1</sup>- and school<sup>2</sup>-related commuting accidents



<sup>1</sup> Accidents on the way to or from work which are either fatal or lead to an incapacity to work for more than three days.  
<sup>2</sup> Accidents on the way to or from school (including day care) which are either fatal or lead to medical attention.

Figure 9:  
Work and school-related commuting accidents – new pensions



\* With the introduction of SGB VII (1997), the pension criteria has changed; the minimum time period for limited earning capacity has extended from 13 to 26 weeks until monetary compensation was paid.



Table 10:

**Work-related accidents – new pensions<sup>1</sup>**  
**– absolute figures –**

Year	Accidents at work	Commuting accidents	Total
1987	35,888	10,570	46,458
1988	35,634	9,541	45,175
1989	33,704	8,560	42,264
1990	33,016	8,289	41,305
1991 <sup>2</sup>	33,458	8,919	42,377
1992 <sup>2</sup>	35,986	10,294	46,280
1993 <sup>2</sup>	38,736	11,426	50,162
1994	37,983	11,093	49,076
1995	37,809	11,001	48,810
1996	37,368	11,876	49,244
1997 <sup>3</sup>	31,243	9,928	41,171
1998	28,136	9,031	37,167
1999	26,687	8,652	35,339
2000	24,903	8,082	32,985
2001	23,403	7,533	30,936
2002	22,667	7,684	30,351
2003	21,734	7,718	29,452
2004	20,135	7,292	27,427
2005	19,237	7,001	26,238
2006	18,639	7,142	25,781
2007	17,171	6,170	23,341
2008	16,823	5,629	22,452
2009	16,590	5,944	22,534
2010	16,564	6,076	22,640
2011	15,740	5,951	21,691
2012	15,344	5,449	20,793
2013	14,990	5,146	20,136
2014	14,540	4,997	19,537
2015	14,460	4,809	19,269
2016	14,132	4,716	18,848
2017	13,625	4,607	18,232

<sup>1</sup> Serious cases for which a pension, lump-sum payment or death grant was paid for the first time in the year under review

<sup>2</sup> See note on p. 7 for interpretation

<sup>3</sup> With the introduction of SGB VII (1997), the pension criteria has changed; the minimum time period for limited earning capacity has extended from 13 to 26 weeks until monetary compensation was paid

Table 10a:

**School-related accidents – new pensions<sup>1</sup>**  
**– absolute figures –**

Year	Accidents at school	School commuting accidents	Total
1987	2,265	1,255	3,520
1988	2,272	1,189	3,461
1989	1,961	1,034	2,995
1990	1,710	935	2,645
1991 <sup>2</sup>	1,762	873	2,635
1992 <sup>2</sup>	1,806	899	2,705
1993 <sup>2</sup>	1,764	893	2,657
1994	1,944	915	2,859
1995	1,935	810	2,745
1996	1,926	882	2,808
1997 <sup>3</sup>	1,784	725	2,509
1998	1,333	644	1,977
1999	1,204	552	1,756
2000	1,107	512	1,619
2001	1,074	498	1,572
2002	1,081	520	1,601
2003	1,276	500	1,776
2004	1,288	459	1,747
2005	1,209	469	1,678
2006	1,021	390	1,411
2007	799	339	1,138
2008	733	311	1,044
2009	751	314	1,065
2010	619	317	936
2011	505	303	808
2012	601	315	916
2013	542	230	772
2014	472	244	716
2015	541	248	789
2016	479	228	707
2017	451	208	659

<sup>1</sup> Serious cases for which a pension, lump-sum payment or death grant was paid for the first time in the year under review

<sup>2</sup> See note on p. 7 for interpretation

<sup>3</sup> With the introduction of SGB VII (1997), the pension criteria has changed; the minimum time period for limited earning capacity has extended from 13 to 26 weeks until monetary compensation was paid

Table 11:

**Work-related accidents – new pensions  
– per 1,000 FTE/weighted insurance relationships –**

Year	Accidents at work		Commuting accidents per 1,000 weighted insurance relationships
	Per 1,000 full time equivalent employees	Per one million hours worked	
1987	1.342	0.829	0.379
1988	1.306	0.805	0.327
1989	1.207	0.749	0.286
1990	1.141	0.718	0.267
1991 <sup>1</sup>	0.959	0.603	0.223
1992 <sup>1</sup>	1.021	0.631	0.254
1993 <sup>1</sup>	1.112	0.717	0.289
1994	1.093	0.697	0.282
1995	1.066	0.676	0.274
1996	1.028	0.668	0.298
1997 <sup>2</sup>	0.869	0.565	0.248
1998	0.794	0.510	0.227
1999	0.747	0.479	0.215
2000	0.696	0.452	0.200
2001	0.658	0.430	0.188
2002	0.652	0.426	0.196
2003	0.632	0.413	0.200
2004	0.576	0.364	0.188
2005	0.559	0.356	0.179
2006	0.530	0.335	0.178
2007	0.480	0.302	0.150
2008	0.464	0.288	0.135
2009	0.455	0.290	0.141
2010	0.448	0.280	0.142
2011	0.420	0.264	0.137
2012	0.404	0.256	0.121
2013	0.386	0.249	0.113
2014	0.372	0.239	0.108
2015	0.367	0.234	0.102
2016	0.353	0.225	0.098
2017	0.330	0.212	0.093

<sup>1</sup> See note on p. 7 for interpretation

<sup>2</sup> With the introduction of SGB VII (1997), the pension criteria has changed; the minimum time period for limited earning capacity has extended from 13 to 26 weeks until monetary compensation was paid

Table 11a:

**School-related accidents – new pensions  
– per 1,000 pupils –**

Year	Accidents at school per 1,000 pupils	School commuting accidents per 1,000 pupils	All accidents per 1,000 pupils
1987	0.187	0.103	0.290
1988	0.190	0.099	0.289
1989	0.165	0.087	0.251
1990	0.143	0.078	0.221
1991 <sup>1</sup>	0.118	0.059	0.177
1992 <sup>1</sup>	0.114	0.057	0.171
1993 <sup>1</sup>	0.109	0.055	0.164
1994	0.119	0.056	0.175
1995	0.118	0.049	0.167
1996	0.115	0.052	0.167
1997 <sup>2</sup>	0.102	0.041	0.143
1998	0.075	0.036	0.112
1999	0.068	0.031	0.100
2000	0.064	0.029	0.093
2001	0.062	0.029	0.090
2002	0.062	0.030	0.092
2003	0.073	0.029	0.102
2004	0.074	0.026	0.100
2005	0.070	0.027	0.097
2006	0.059	0.022	0.081
2007	0.046	0.020	0.066
2008	0.043	0.018	0.061
2009	0.044	0.018	0.062
2010	0.036	0.019	0.055
2011	0.030	0.018	0.047
2012	0.035	0.018	0.053
2013	0.032	0.013	0.045
2014	0.028	0.014	0.042
2015	0.032	0.014	0.046
2016	0.028	0.013	0.041
2017	0.026	0.012	0.038

<sup>1</sup> See note on p. 7 for interpretation

<sup>2</sup> With the introduction of SGB VII (1997), the pension criteria has changed; the minimum time period for limited earning capacity has extended from 13 to 26 weeks until monetary compensation was paid

Table 12:

**Accidents at work – new pensions by sector and BG  
– absolute figures –**

	2005	2010	2015	2016	2017
<b>Accident insurance in industrial sector</b>	<b>17,494</b>	<b>15,336</b>	<b>13,362</b>	<b>13,092</b>	<b>12,580</b>
101 BG for the raw materials and chemical industry	1,003	774	591	603	488
102 BG for the wood-working and metal-working industries	3,000	2,578	2,086	1,975	1,863
103 BG for the energy, textile, electrical and media products sectors	1,567	1,491	1,151	1,105	1,101
104 BG for the building trade	3,419	2,518	2,681	2,605	2,305
105 BG for the foodstuffs and catering industry	1,228	1,039	722	759	782
106 BG for the trade and logistics industry	2,154	1,899	1,575	1,561	1,472
107 BG for the Transport industry, postal logistics and telecommunications	1,825	1,680	1,391	1,368	1,398
108 BG for the administrative sector	2,298	2,380	2,273	2,276	2,282
109 BG for the health and welfare services	1,000	977	892	840	889
<b>Accident insurance in public sector (General AI)</b>	<b>1,743</b>	<b>1,228</b>	<b>1,098</b>	<b>1,040</b>	<b>1,045</b>
<b>Total</b>	<b>19,237</b>	<b>16,564</b>	<b>14,460</b>	<b>14,132</b>	<b>13,625</b>
<b>Pupil accident insurance</b> <i>Accidents at school – new pensions</i>	<i>1,209</i>	<i>619</i>	<i>541</i>	<i>479</i>	<i>451</i>

Table 12a:

**Accidents at school – new pensions by region  
– absolute figures –**

	2005	2010	2015	2016	2017
Baden–Württemberg	109	47	65	47	54
Bavaria	102	141	57	53	38
Berlin	40	13	9	16	9
Brandenburg	57	37	13	15	13
Bremen	5	2	1	4	1
Hamburg/ Schleswig-Holstein <sup>1</sup>	31	25	13	15	18
Hesse	42	35	39	37	29
Mecklenburg- Vorpommern	15	10	2	7	7
Lower Saxony	44	70	48	35	20
North Rhine-Westphalia	454	140	212	162	200
Rhineland-Palatinate	29	17	26	12	11
Saarland	9	9	0	4	2
Saxony	132	40	33	40	27
Saxony-Anhalt	43	15	17	17	11
Thuringia	97	18	6	15	11
<b>Total</b>	<b>1,209</b>	<b>619</b>	<b>541</b>	<b>479</b>	<b>451</b>

<sup>1</sup> Public sector accident insurance institution spanning two Länder

Table 13:

**Accidents at work – new pensions by sector and BG  
– per 1,000 FTE/pupils –**

	2005	2010	2015	2016	2017
<b>Accident insurance in industrial sector</b>	<b>0.589</b>	<b>0.479</b>	<b>0.388</b>	<b>0.375</b>	<b>0.349</b>
101 BG for the raw materials and chemical industry	0.809	0.656	0.487	0.492	0.392
102 BG for the wood-working and metal-working industries	0.758	0.671	0.510	0.494	0.440
103 BG for the energy, textile, electrical and media products sectors	0.499	0.515	0.375	0.362	0.360
104 BG for the building trade	1.852	1.423	1.454	1.374	1.192
105 BG for the foodstuffs and catering industry	0.649	0.572	0.373	0.383	0.385
106 BG for the trade and logistics industry	0.582	0.508	0.351	0.341	0.321
107 BG for the Transport industry, postal logistics and telecommunications	1.138	1.006	0.847	0.823	0.819
108 BG for the administrative sector	0.259	0.215	0.196	0.192	0.186
109 BG for the health and welfare services	0.290	0.239	0.197	0.178	0.180
<b>Accident insurance in public sector (General AI)</b>	<b>0.370</b>	<b>0.251</b>	<b>0.220</b>	<b>0.203</b>	<b>0.199</b>
<b>Total</b>	<b>0.559</b>	<b>0.448</b>	<b>0.367</b>	<b>0.353</b>	<b>0.330</b>
<b>Pupil accident insurance</b> <i>Accidents at school – new pensions per 1,000 pupils</i>	<i>0.070</i>	<i>0.036</i>	<i>0.032</i>	<i>0.028</i>	<i>0.026</i>

Table 14:

**Commuting accidents – new pensions by sector and BG  
– absolute figures –**

	2005	2010	2015	2016	2017
<b>Accident insurance in industrial sector</b>	<b>6,153</b>	<b>5,334</b>	<b>4,187</b>	<b>4,130</b>	<b>3,995</b>
101 BG for the raw materials and chemical industry	316	245	188	217	193
102 BG for the wood-working and metal-working industries	933	787	629	585	570
103 BG for the energy, textile, electrical and media products sectors	698	588	430	412	404
104 BG for the building trade	462	385	291	271	281
105 BG for the foodstuffs and catering industry	488	409	328	271	284
106 BG for the trade and logistics industry	979	732	589	583	531
107 BG for the Transport industry, postal logistics and telecommunications	270	225	158	145	176
108 BG for the administrative sector	1,108	1,141	925	920	923
109 BG for the health and welfare services	899	822	649	726	633
<b>Accident insurance in public sector (General AI)</b>	<b>848</b>	<b>742</b>	<b>622</b>	<b>586</b>	<b>612</b>
<b>Total</b>	<b>7,001</b>	<b>6,076</b>	<b>4,809</b>	<b>4,716</b>	<b>4,607</b>
<b>Pupil accident insurance</b> <i>School commuting accidents – new pensions</i>	<i>469</i>	<i>317</i>	<i>248</i>	<i>228</i>	<i>208</i>

Table 14a:

**School commuting accidents – new pensions by region  
– absolute figures –**

	2005	2010	2015	2016	2017
Baden–Württemberg	57	43	38	38	41
Bavaria	44	55	36	32	22
Berlin	9	6	2	4	4
Brandenburg	18	14	6	10	11
Bremen	1	3	1	-	2
Hamburg/ Schleswig-Holstein <sup>1</sup>	19	9	10	9	8
Hesse	32	19	18	19	7
Mecklenburg- Vorpommern	8	3	1	3	-
Lower Saxony	41	49	45	29	33
North Rhine-Westphalia	133	56	61	50	58
Rhineland-Palatinate	14	13	4	3	6
Saarland	5	4	1	2	1
Saxony	42	25	12	23	7
Saxony-Anhalt	24	9	10	3	4
Thuringia	22	9	3	3	4
<b>Total</b>	<b>469</b>	<b>317</b>	<b>248</b>	<b>228</b>	<b>208</b>

<sup>1</sup> Public sector accident insurance institution spanning two Länder

Table 15:

**Commuting accidents – new pensions by sector and BG  
– per 1,000 weighted insurance relationships/pupils –**

	2005	2010	2015	2016	2017
<b>Accident insurance in industrial sector</b>	<b>0.181</b>	<b>0.143</b>	<b>0.102</b>	<b>0.099</b>	<b>0.093</b>
101 BG for the raw materials and chemical industry	0.247	0.200	0.133	0.151	0.129
102 BG for the wood-working and metal-working industries	0.226	0.184	0.133	0.122	0.117
103 BG for the energy, textile, electrical and media products sectors	0.205	0.161	0.111	0.108	0.105
104 BG for the building trade	0.173	0.145	0.106	0.096	0.098
105 BG for the foodstuffs and catering industry	0.147	0.123	0.091	0.073	0.075
106 BG for the trade and logistics industry	0.234	0.175	0.110	0.106	0.096
107 BG for the Transport industry, postal logistics and telecommunications	0.165	0.132	0.094	0.085	0.101
108 BG for the administrative sector	0.135	0.113	0.088	0.086	0.082
109 BG for the health and welfare services	0.172	0.132	0.092	0.100	0.085
<b>Accident insurance in public sector (General AI)</b>	<b>0.167</b>	<b>0.138</b>	<b>0.098</b>	<b>0.090</b>	<b>0.092</b>
<b>Total</b>	<b>0.179</b>	<b>0.142</b>	<b>0.102</b>	<b>0.098</b>	<b>0.093</b>
<b>Pupil accident insurance</b> <i>School commuting accidents – new pensions per 1,000 pupils</i>	<i>0.027</i>	<i>0.019</i>	<i>0.014</i>	<i>0.013</i>	<i>0.012</i>

Table 16:

**Fatal work-related accidents**  
– absolute figures –

Year	Accidents at work	Commuting accidents	Total
1987	1,168	706	1,874
1988	1,242	730	1,972
1989	1,185	728	1,913
1990	1,208	694	1,902
1991 <sup>1</sup>	1,160	713	1,873
1992 <sup>1</sup>	1,443	884	2,327
1993 <sup>1</sup>	1,543	921	2,464
1994 <sup>2</sup>	1,372	928	2,300
1995	1,326	911	2,237
1996	1,273	822	2,095
1997	1,119	857	1,976
1998	1,040	780	1,820
1999	1,070	830	1,900
2000	918	794	1,712
2001	870	743	1,613
2002	857	659	1,516
2003	821	680	1,501
2004	714	560	1,274
2005	656	552	1,208
2006	711	535	1,246
2007	619	503	1,122
2008	572	458	1,030
2009	456	362	818
2010	519	367	886
2011	498	394	892
2012	500	386	886
2013	455	317	772
2014	483	322	805
2015	470	348	818
2016	424	311	735
2017	451	280	731

<sup>1</sup> See note on p. 7 for interpretation

<sup>2</sup> 1993 and earlier: new fatal accident pensions

Since 1994: death with the year under review and within 30 days following the accident

Table 16a:

**Fatal school-related accidents**  
– absolute figures –

Year	Accidents at school	School commuting accidents	Total
1987	21	112	133
1988	19	106	125
1989	19	69	88
1990	6	65	71
1991 <sup>1</sup>	14	75	89
1992 <sup>1</sup>	16	114	130
1993 <sup>1</sup>	14	91	105
1994 <sup>2</sup>	13	112	125
1995	25	107	132
1996	18	115	133
1997	20	120	140
1998	18	119	137
1999	22	120	142
2000	19	93	112
2001	14	106	120
2002	14	97	111
2003	13	121	134
2004	6	79	85
2005	9	72	81
2006	11	54	65
2007	5	57	62
2008	8	68	76
2009	14	45	59
2010	6	50	56
2011	7	70	77
2012	8	48	56
2013	6	37	43
2014	6	36	42
2015	21	40	61
2016	10	31	41
2017	11	38	49

<sup>1</sup> See note on p. 7 for interpretation

<sup>2</sup> 1993 and earlier: new fatal accident pensions

Since 1994: death with the year under review and within 30 days following the accident

Table 17:

**Fatal work-related accidents  
– per 1,000 FTE/weighted insurance relationships –**

Year	Accidents at work		Commuting accidents per 1,000 weighted insurance relationships
	Per 1,000 full time equivalent employees	Per one million hours worked	
1987	0.044	0.027	0.025
1988	0.046	0.028	0.025
1989	0.042	0.026	0.024
1990	0.042	0.026	0.022
1991 <sup>1</sup>	0.033	0.021	0.018
1992 <sup>1</sup>	0.041	0.025	0.022
1993 <sup>1</sup>	0.044	0.028	0.023
1994 <sup>2</sup>	0.039	0.025	0.024
1995	0.037	0.024	0.023
1996	0.035	0.023	0.021
1997	0.031	0.020	0.021
1998	0.029	0.019	0.020
1999	0.030	0.019	0.021
2000	0.026	0.017	0.020
2001	0.024	0.016	0.019
2002	0.025	0.016	0.017
2003	0.024	0.016	0.018
2004	0.020	0.013	0.014
2005	0.019	0.012	0.014
2006	0.020	0.013	0.013
2007	0.017	0.011	0.012
2008	0.016	0.010	0.011
2009	0.013	0.008	0.009
2010	0.014	0.009	0.009
2011	0.013	0.008	0.009
2012	0.013	0.008	0.009
2013	0.012	0.008	0.007
2014	0.012	0.008	0.007
2015	0.012	0.008	0.007
2016	0.011	0.007	0.006
2017	0.011	0.007	0.006

<sup>1</sup> See note on p. 7 for interpretation

<sup>2</sup> 1993 and earlier: new fatal accident pensions

Since 1994: death with the year under review and within 30 days following the accident

Table 18:

**Fatal accidents at work by sector and BG  
– absolute figures –**

	2005	2010	2015	2016	2017
<b>Accident insurance in industrial sector</b>	<b>589</b>	<b>493</b>	<b>428</b>	<b>393</b>	<b>414</b>
101 BG for the raw materials and chemical industry	28	23	24	23	12
102 BG for the wood-working and metal-working industries	90	51	52	46	46
103 BG for the energy, textile, electrical and media products sectors	52	34	25	33	27
104 BG for the building trade	113	103	86	73	88
105 BG for the foodstuffs and catering industry	23	23	14	7	17
106 BG for the trade and logistics industry	64	59	33	39	38
107 BG for the Transport industry, postal logistics and telecommunications	133	117	103	83	77
108 BG for the administrative sector	70	70	75	82	101
109 BG for the health and welfare services	16	13	16	7	8
<b>Accident insurance in public sector (General AI)</b>	<b>67</b>	<b>26</b>	<b>42</b>	<b>31</b>	<b>37</b>
<b>Total</b>	<b>656</b>	<b>519</b>	<b>470</b>	<b>424</b>	<b>451</b>
<i>Fatal accidents at school</i>	9	6	21	10	11

Table 19:

**Fatal commuting accidents by sector and BG**  
**– absolute figures –**

	2005	2010	2015	2016	2017
<b>Accident insurance in industrial sector</b>	<b>498</b>	<b>340</b>	<b>310</b>	<b>284</b>	<b>244</b>
101 BG for the raw materials and chemical industry	21	16	13	16	21
102 BG for the wood-working and metal-working industries	91	51	67	57	39
103 BG for the energy, textile, electrical and media products sectors	61	38	26	23	29
104 BG for the building trade	40	41	32	25	13
105 BG for the foodstuffs and catering industry	52	31	22	28	25
106 BG for the trade and logistics industry	77	46	43	33	33
107 BG for the Transport industry, postal logistics and telecommunications	27	16	16	19	16
108 BG for the administrative sector	85	61	55	50	42
109 BG for the health and welfare services	44	40	36	33	26
<b>Accident insurance in public sector (General AI)</b>	<b>54</b>	<b>27</b>	<b>38</b>	<b>27</b>	<b>36</b>
<b>Total</b>	<b>552</b>	<b>367</b>	<b>348</b>	<b>311</b>	<b>280</b>
<i>Fatal school commuting accidents</i>	<i>72</i>	<i>50</i>	<i>40</i>	<i>31</i>	<i>38</i>

Table 19a:

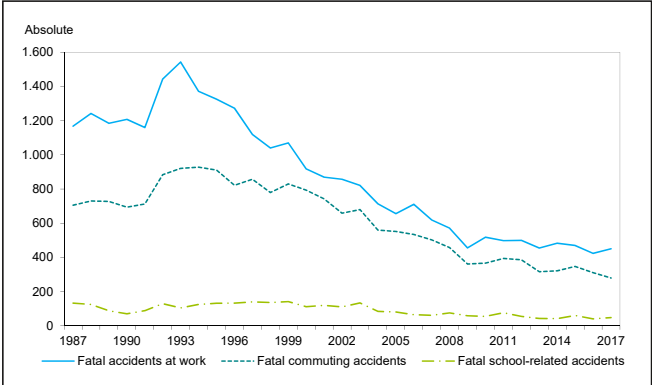
**Fatal school-related accidents by region**  
**– absolute figures –**

	2005	2010	2015	2016	2017
Baden–Württemberg	8	11	6	6	5
Bavaria	16	13	7	7	5
Berlin	3	–	–	–	–
Brandenburg	3	1	4	4	–
Bremen	–	–	–	–	1
Hamburg/ Schleswig-Holstein <sup>1</sup>	5	4	–	–	2
Hesse	3	4	3	3	4
Mecklenburg- Vorpommern	3	–	–	–	–
Lower Saxony	7	5	8	8	7
North Rhine-Westphalia	12	8	24	24	14
Rhineland-Palatinate	4	1	4	4	5
Saarland	1	1	–	–	1
Saxony	7	4	3	3	–
Saxony-Anhalt	5	3	–	–	5
Thuringia	4	1	2	2	–
<b>Total</b>	<b>81</b>	<b>56</b>	<b>61</b>	<b>61</b>	<b>49</b>

<sup>1</sup> Public sector accident insurance institution spanning two Länder



Figure 10:  
**Fatal accidents**



\* see note on p. 7 for interpretation

Table 20a:

**Occupational Diseases as contained in the annex to the German ordinance on occupational diseases<sup>1</sup>**

No.	Occupational diseases
<b>1</b>	<b>Diseases caused by chemical agents</b>
<b>11</b>	<b>Metals and metalloids</b>
1101	Diseases caused by lead or its compounds
1102	Diseases caused by mercury or its compounds
1103	Diseases caused by chromium or its compounds
1104	Diseases caused by cadmium or its compounds
1105	Diseases caused by manganese or its compounds
1106	Diseases caused by thallium or its compounds
1107	Diseases caused by vanadium or its compounds
1108	Diseases caused by arsenic or its compounds
1109	Diseases caused by phosphorus or its inorganic compounds
1110	Diseases caused by beryllium or its compounds
<b>12</b>	<b>Asphyxiating gases</b>
1201	Diseases caused by carbon monoxide
1202	Diseases caused by hydrogen sulphide
<b>13</b>	<b>Solvents, pesticides and other chemical agents</b>
1301	Mucosal changes, cancer or other neoplasms of the urinary tract caused by aromatic amines
1302	Diseases caused by halogenated hydrocarbons
1303	Diseases caused by benzene and its homologues or by styrene
1304	Diseases caused by nitro or amino compounds of benzene or its homologues or their derivatives
1305	Diseases caused by carbon disulphide
1306	Diseases caused by methyl alcohol (methanol)
1307	Diseases caused by organic phosphorus compounds
1308	Diseases caused by fluorine or its compounds
1309	Diseases caused by nitric acid esters
1310	Diseases caused by halogenated alkyl oxide, aryl oxide or alkyl aryl oxide
1311	Diseases caused by halogenated alkyl sulphide, aryl sulphide or alkyl aryl sulphide
1312	Dental diseases caused by acids
1313	Lesions to the cornea of the eye caused by benzoquinone
1314	Diseases caused by para-tertiary-butylphenol
1315	Diseases caused by isocyanates <sup>2</sup>
1316	Liver diseases caused by dimethyl formamide
1317	Polyneuropathy or encephalopathy caused by organic solvents or their mixtures

<sup>1</sup> in the version of 10.07.2017

<sup>2</sup> These diseases must be so severe as to have forced the person to discontinue all activities that caused or could cause the development, worsening or recurrence of the disease

No.	Occupational diseases
1318	Diseases of blood, blood generating and lymphatic system caused by Benzol
1319	Laryngeal cancer caused by intensive and multiyear exposure to mists and vapours from sulphuric acid
1320	Chronic lymphocytic leukaemia and chronic myeloid leukaemia caused by 1,3-butadiene if there is evidence of exposure to a cumulative dose of at least 180 butadiene-years (ppm x years)
1321	Mucosal changes, cancer or other neoplasms of the urinary tract caused by polycyclic aromatic hydrocarbons if there is evidence of exposure to a cumulative dose of at least 80 benzo(a)pyrene-years [(µg <sup>m3</sup> ) x years]
<b>2</b>	<b>Diseases caused by physical impact</b>
<b>21</b>	<b>Mechanical impact</b>
2101	Diseases of the tendon sheaths or diseases of the peritendinous tissue or of the insertions of tendons or muscles <sup>2</sup>
2102	Meniscus lesions caused by excessive physical load on the knee joints either sustained or repeated over several years
2103	Diseases caused by vibration during work with pneumatic or similar tools or machines
2104	Circulatory disturbances of the hands caused by vibration <sup>2</sup>
2105	Chronic diseases of the mucous bursae caused by constant pressure
2106	Pressure-induced nerve damage
2107	Strain fracture of the spinous processes
2108	Disc-related diseases of the lumbar spine caused by the lifting or carrying of heavy loads over many years or by performance of work in an extremely bent posture over many years <sup>2</sup>
2109	Disc-related diseases of the cervical spine caused by the carrying of heavy loads on the shoulder over many years <sup>2</sup>
2110	Disc-related diseases of the lumbar spine caused by the predominately vertical impact of whole-body vibration in a seated position over many years <sup>2</sup>
2111	Excessive dental abrasion caused by silica dust exposure over several years
2112	Osteoarthritis of the knee caused by kneeling or comparable knee straining activities with a cumulative exposure period in the whole working life at least of 13,000 hours and a minimum exposure time per shift of 1 hour
2113	Pressure damage of the median nerve in the carpal tunnel (carpal tunnel syndrome) by repetitive manual tasks with

<sup>2</sup> These diseases must be so severe as to have forced the person to discontinue all activities that caused or could cause the development, worsening or recurrence of the disease

No.	Occupational diseases
	bending and stretching of the wrist, by elevated effort of hands, or by hand-arm-vibration
2114	Vascular damage of the hand by percussion-like force effect (Hypothenar Hammer Syndrome and Thenar Hammer Syndrome)
2115	Focal dystonia, disease of the central nervous system in instrumental musicians caused by high-intensity fine motor work
<b>22</b>	<b>Compressed air</b>
2201	Diseases caused by work in compressed air
<b>23</b>	<b>Noise</b>
2301	Hearing impairment caused by noise
<b>24</b>	<b>Radiation</b>
2401	Cataract caused by heat radiation
2402	Diseases caused by ionizing radiation
<b>3</b>	<b>Diseases caused by infectious agents or parasites including tropical diseases</b>
3101	Infectious diseases in cases where the insured person worked in health care, welfare or laboratories or was particularly exposed to a similar risk of infection in the context of another activity
3102	Diseases transmitted to humans by animals
3103	Miner's vermination caused by <i>Ancylostoma duodenale</i> (ancylostomiasis) or <i>Strongyloides stercoralis</i> (strongyloidiasis)
3104	Tropical diseases, typhus
<b>4</b>	<b>Diseases of the respiratory tract, lungs, pleura, peritoneum and ovary</b>
<b>41</b>	<b>Diseases caused by inorganic dust</b>
4101	Silicosis
4102	Silicosis combined with active pulmonary tuberculosis (silituberculosis)
4103	Asbestosis or diseases of the pleura caused by asbestos dust
4104	Lung cancer, larynx cancer or ovarian cancer <ul style="list-style-type: none"> <li>– combined with asbestosis</li> <li>– combined with diseases of the pleura caused by asbestos dust or</li> <li>– if there is evidence of cumulative exposure to asbestos dust in the workplace of at least 25 fibre years <math>\{25 \cdot 10^6 [(fibre/m^3) \cdot \text{years}]\}</math></li> </ul>

No.	Occupational diseases
4105	Mesothelioma of the pleura, the peritoneum or the pericardium caused by asbestos
4106	Diseases of the lower respiratory tract and the lungs caused by aluminium or its compounds
4107	Pulmonary fibrosis caused by metallic powder present in the production or processing of hard metals
4108	Diseases of the lower respiratory tract and the lungs caused by dust from basic slag (Thomas phosphate)
4109	Malignant neoplasms of the respiratory tract and the lungs caused by nickel or its compounds
4110	Malignant neoplasms of the respiratory tract and the lungs caused by crude coke oven gas
4111	Chronic obstructive bronchitis or emphysema in underground hard coal miners if there is evidence of exposure to a cumulative dose of generally 100 fine dust years $[(mg/m^3) \cdot \text{years}]$
4112	Lung cancer caused by silica dust where there is accompanying silicosis or silicotuberculosis
4113	Lung cancer or larynx cancer caused by polycyclic aromatic hydrocarbons if there is evidence of exposure to a cumulative dose of at least 100 benzo[a]pyrene years $[(\mu g/m^3) \cdot \text{years}]$
4114	Lung cancer caused by simultaneous exposure to asbestos fiber dust and polycyclic aromatic hydrocarbons if there is evidence of exposure to a cumulative dose corresponding to a causative probability of at least 50 % according to annex
4115	Lung fibrosis caused by extreme and longlasting exposure to welding fumes and gases (Siderofibrosis)
<b>42</b>	<b>Diseases caused by organic dust</b>
4201	Exogenic allergic alveolitis
4202	Diseases of the lower respiratory tract and the lungs caused by raw cotton, raw flax or raw hemp dust (byssinosis)
4203	Adenocarcinoma of the nasal cavities and sinuses caused by beech or oak wood dust
43	Obstructive diseases of the respiratory tract
4301	Obstructive diseases of the respiratory tract (including rhinopathy) caused by allergic agents <sup>2</sup>
4302	Obstructive diseases of the respiratory tract caused by chemical irritants or agents with a toxic effect <sup>2</sup>
<b>5</b>	<b>Skin diseases</b>
5101	Severe or recurrent skin diseases <sup>2</sup>

<sup>2</sup> These diseases must be so severe as to have forced the person to discontinue all activities that caused or could cause the development, worsening or recurrence of the disease

No.	Occupational diseases
5102	Skin cancer or skin alterations showing a cancerous tendency caused by soot, paraffin sludge, tar, anthracene, pitch or similar substances
5103	Squamous cell carcinoma or multiple actinic keratosis of the skin caused by natural ultraviolet irradiation
<b>6</b>	<b>Diseases caused by other factors</b>
6101	Miner's nystagmus

Table 20b:

**Occupational diseases as contained in the appendix of the former GDR ordinance on occupational diseases**

No.	Occupational diseases
	<b>I. Diseases caused by chemical agents</b>
01	Lead and inorganic lead compounds
02	Organic lead compounds
03	Cadmium and cadmium compounds
04	Mercury and inorganic mercury compounds
05	Organic mercury compounds
06	Manganese and manganese compounds
07	Beryllium and beryllium compounds
08	Nickel and nickel compounds
09	Chromium and chromium compounds
10	Arsenic and arsenic compounds (except arsine)
11	Arsine
12	Phosphor and inorganic phosphor compounds
13	Organic phosphor compounds
14	Fluorine and inorganic fluorine compounds
15	Carbon monoxide
16	Hydrogen sulphide
17	Carbon bisulphide
18	Benzene
19	Toluene, xylene
20	Styrene
21	Aliphatic halogenated hydrocarbons (except vinyl chloride)
22	Vinyl chloride
23	Aromatic halogenated hydrocarbons
24	Aromatic nitro compounds and ammonia compounds
25	Methanol
26	Dimethyl formamide
27	Nitric acid ester
28	Benzoquinone
29	Acids
	<b>II. Diseases caused by dust</b>
40	Quarz
41	Asbestos
42	Aluminium
43	Hard metal
44	Thomas slag meal

No.	Occupational diseases
	<b>III. Diseases caused by physical agents</b>
50	Noise
51	Ionising radiation
52	Non-ionising radiation
53	Compressed air
54	Partial body vibration
	<b>IV. Diseases caused by infective agents and parasites</b>
60	Infective agents and parasites which can be transmitted from humans to humans
61	Infective agents and parasites which can be transmitted from animals to humans
62	Infective agents and parasites picked up in the tropics
	<b>V. Diseases caused by continued mechanical strain on the locomotor system</b>
70	Degenerative diseases of the spine
71	Degenerative diseases of the limb joints
72	Conditions of the tendon tissue, the tendon sheath, the tendon chambers, the tendon origins and attachments and the muscle origins and attachments
73	Damage caused by pressure on the peripheral nerves
74	Chronic conditions of the mucous bursa causes by pressure
75	Fatigue fractures of bones
	<b>VI. Diseases caused by various agents</b>
80	Skin diseases caused by chemical and physical agents
81	Irrative chronic diseases of the upper and lower respiratory tracts and lungs caused by chemical substances
82	Allergic diseases of the upper and lower respiratory tracts and lungs caused by vegetable or animal allergens or chemical substances
	<b>VII. Work-related malignant neoplasms</b>
90	Malignant neoplasms of the skin
91	Malignant neoplasms caused by chemical carcinogenics
92	Malignant neoplasms caused by ionising radiation
93	Malignant neoplasms caused by asbestos

Table 21:

**Decided cases**

	2007	2008	2009	2010	2011	2012	2013	2014	2015	2016	2017	Change from 2016 to 2017	
												absolut	%
<b>Occupational causation confirmed</b>	<b>23,663</b>	<b>23,028</b>	<b>25,570</b>	<b>31,219</b>	<b>34,573</b>	<b>35,293</b>	<b>36,202</b>	<b>36,754</b>	<b>37,149</b>	<b>40,056</b>	<b>38,080</b>	- 1,976	- 4.9
of which ■ Recognized cases of occupational disease <sup>1</sup>	13,383	12,972	16,078	15,461	15,262	15,291	15,656	16,112	16,802	20,539	19,794	- 745	- 3.6
<i>of witch: new pensions</i>	4,123	4,312	6,643	6,123	5,407	4,924	4,815	5,155	5,049	5,365	4,956	- 409	- 7.6
■ Cases with absence of additionally required insurance characteristics <sup>2</sup>	10,280	10,056	9,492	15,758	19,311	20,002	20,546	20,642	20,347	19,517	18,286	- 1,231	- 6.3
<b>Occupational causation not confirmed</b>	<b>35,980</b>	<b>36,440</b>	<b>37,132</b>	<b>37,967</b>	<b>37,165</b>	<b>36,096</b>	<b>36,725</b>	<b>38,425</b>	<b>38,941</b>	<b>39,973</b>	<b>39,250</b>	- 723	- 1.8
<b>Total number of decided cases</b>	<b>59,643</b>	<b>59,468</b>	<b>62,702</b>	<b>69,186</b>	<b>71,738</b>	<b>71,389</b>	<b>72,927</b>	<b>75,179</b>	<b>76,090</b>	<b>80,029</b>	<b>77,330</b>	- 2,699	- 3.4

<sup>1</sup> The increase is partly due to new occupational diseases, which were added on January 1, 2015.

<sup>2</sup> The reason for the increase from 2010 is the improvement of the documentation § 3 of the German Ordinance on Occupational Diseases step 1 of the phased procedure "skin".

Table 22:

**Occupational diseases (OD) in 2017 by subgroups of diseases;  
summary**

Group	Sub-Group	Disease	Notifications of a suspected case of OD	Fatalities due to OD	Decided cases					
					Total	Occupational causation confirmed			Occupational causation not confirmed	
						Total	Recognized cases of OD			Cases with absence of additionally required insurance characteristics
					Total	Of which new pensions				
<b>1</b>		<b>Conditions due to chemical agents</b>	<b>4,281</b>	<b>181</b>	<b>3,997</b>	<b>679</b>	<b>667</b>	<b>489</b>	<b>12</b>	<b>3,318</b>
	11	Metals and metalloids	348	14	363	37	37	27	–	326
	12	Asphyxiating gases	35	–	44	12	12	–	–	32
	13	Solvents, pesticides and other chemical substances	3,898	167	3,590	630	618	462	12	2,960
<b>2</b>		<b>Conditions due to physical agents</b>	<b>23,727</b>	<b>34</b>	<b>24,073</b>	<b>8,235</b>	<b>8,126</b>	<b>861</b>	<b>109</b>	<b>15,838</b>
	21	Mechanical agents	10,909	2	11,522	1,555	1,446	617	109	9,967
	22	Compressed air	2	–	5	1	1	–	–	4
	23	Noise	12,499	–	12,242	6,649	6,649	220	–	5,593
	24	Radiation	317	32	304	30	30	24	–	274
<b>3</b>		<b>Diseases caused by infective agents or parasites including tropical diseases</b>	<b>2,958</b>	<b>21</b>	<b>2,810</b>	<b>1,332</b>	<b>1,332</b>	<b>55</b>	<b>–</b>	<b>1,478</b>
<b>4</b>		<b>Conditions of the respiratory passages and the lungs, the pleura, the peritoneum and the ovary</b>	<b>15,390</b>	<b>2,264</b>	<b>16,358</b>	<b>5,443</b>	<b>5,185</b>	<b>2,968</b>	<b>258</b>	<b>10,915</b>
	41	Conditions caused by inorganic dust	12,303	2,182	12,705	4,555	4,555	2,653	–	8,150
	42	Conditions caused by organic dust	239	30	260	89	89	59	–	171
	43	Conditions related to obstruction of the respiratory tract	2,848	52	3,393	799	541	256	258	2,594
<b>5</b>		<b>Skin diseases</b>	<b>27,695</b>	<b>10</b>	<b>28,923</b>	<b>22,355</b>	<b>4,448</b>	<b>557</b>	<b>17,907</b>	<b>6,568</b>
<b>6</b>		<b>Miner's nystagmus</b>	<b>1</b>	<b>–</b>	<b>–</b>	<b>–</b>	<b>–</b>	<b>–</b>	<b>–</b>	<b>–</b>
		<b>GDR–OD<sup>1</sup></b>	<b>–</b>	<b>25</b>	<b>61</b>	<b>4</b>	<b>4</b>	<b>3</b>	<b>–</b>	<b>57</b>
		<b>Other diseases</b>	<b>1,135</b>	<b>45</b>	<b>1,108</b>	<b>32</b>	<b>32</b>	<b>23</b>	<b>–</b>	<b>1,076</b>
		<b>Total</b>	<b>75,187</b>	<b>2,580</b>	<b>77,330</b>	<b>38,080</b>	<b>19,794</b>	<b>4,956</b>	<b>18,286</b>	<b>39,250</b>

<sup>1</sup> Cases in acc. with GDR OD ordinance

Table 23:

**Occupational diseases (OD) in 2017 as contained in the appendix of the former GDR ordinance**

Group of occupational diseases	Fatalities due to OD	Occupational causation confirmed						Occupational causation not confirmed
		Total	Decides cases				Cases with absence of additionally required insurance characteristics	
			Total	Recognized cases of OD				
				Total	Of which new pensions			
Diseases caused by chemical agents	1	–	–	–	–	–	–	
Diseases caused by dust	19	3	2	2	2	–	1	
Diseases caused by physical agents	–	49	–	–	–	–	49	
Diseases caused by infective agents and parasites	–	–	–	–	–	–	–	
Diseases caused by continued mechanical strain on the locomotor system	–	3	–	–	–	–	3	
Diseases caused by various agents	4	5	2	2	1	–	3	
Work-related malignant neoplasms	1	1	–	–	–	–	1	
OD No. unknown	–	–	–	–	–	–	–	
Extraordinary ruling <sup>1</sup>	–	–	–	–	–	–	–	
<b>Total</b>	<b>25</b>	<b>61</b>	<b>4</b>	<b>4</b>	<b>3</b>	<b>–</b>	<b>57</b>	

<sup>1</sup> „Sonderentscheid“ in acc. with § 2 Sec. 2 GDR OD ordinance



Table 24:

## Notifications of suspected cases of occupational disease

OD No.	2005	2010	2015	2016	2017
1101	78	61	49	65	36
1102	30	23	29	24	20
1103	114	110	151	166	197
1104	16	21	23	23	17
1105	5	5	13	10	9
1106	1	1	2	–	1
1107	–	–	2	2	1
1108	19	23	17	46	43
1109	7	7	7	7	4
1110	7	18	32	29	20
1201	150	130	38	78	30
1202	16	11	3	4	5
1301	633	1,138	1,334	1,336	1,663
1302	307	365	276	233	248
1303	376	87	54	54	62
1304	25	17	8	12	8
1305	6	4	5	7	4
1306	11	4	8	3	6
1307	14	6	8	8	12
1308	17	8	6	9	9
1309	4	1	1	3	5
1310	37	22	14	17	18
1311	2	–	1	2	4
1312	134	128	62	61	55
1313	–	1	1	1	–
1314	3	2	2	1	1
1315	99	119	103	130	110
1316	33	22	11	17	19
1317	331	234	164	143	148
1318 <sup>1</sup>	–	725	1,261	1,265	1,338
1319 <sup>2</sup>	–	–	46	44	51
1320 <sup>3</sup>	–	–	–	–	9
1321 <sup>3</sup>	–	–	–	–	128
2101	749	741	722	688	636
2102	1,607	1,411	1,053	1,003	1,029
2103	419	433	432	420	413
2104	64	67	82	98	112
2105	496	381	373	344	306
2106	87	82	98	71	81
2107	4	3	1	1	3
2108	5,515	5,114	5,144	4,759	5,165
2109	1,031	1,019	722	692	636
2110	300	217	167	158	141
2111	19	7	9	7	5

OD No.	2005	2010	2015	2016	2017
2112 <sup>1</sup>	–	1,804	1,400	1,385	1,346
2113 <sup>2</sup>	–	–	1,391	1,009	981
2114 <sup>2</sup>	–	–	59	48	45
2115 <sup>3</sup>	–	–	–	–	10
2201	7	6	2	3	2
2301	9,310	10,979	11,874	12,367	12,499
2401	8	14	17	15	12
2402	634	389	338	327	305
3101	4,047	1,493	1,640	1,959	1,997
3102	508	559	575	634	632
3103	–	2	–	–	–
3104	332	344	327	365	329
4101	1,425	1,571	1,449	1,176	1,064
4102	47	17	19	19	16
4103	3,594	3,732	3,674	3,607	3,425
4104 <sup>3</sup>	2,908	3,709	4,375	4,368	4,922
4105	1,149	1,479	1,397	1,304	1,258
4106	23	23	39	37	45
4107	65	62	62	78	97
4108	3	1	3	–	2
4109	30	40	48	62	75
4110	31	37	25	39	22
4111	799	1,076	545	455	413
4112	124	205	326	307	409
4113 <sup>1,3</sup>	–	140	218	245	288
4114 <sup>1</sup>	–	89	137	125	147
4115 <sup>1</sup>	–	169	128	113	120
4201	67	102	140	140	148
4202	5	14	7	6	6
4203	67	66	87	86	85
4301	2,014	2,045	1,739	1,593	1,445
4302	1,439	1,564	1,506	1,441	1,403
5101	16,529	23,596	23,786	22,574	21,063
5102	61	202	256	206	257
5103 <sup>2</sup>	–	–	5,531	6,101	6,375
6101	6	2	–	3	1
Other	1,921	1,978	1,337	1,253	1,135
<b>Total</b>	<b>59,919</b>	<b>70,277</b>	<b>76,991</b>	<b>75,491</b>	<b>75,187</b>

<sup>1</sup> Added to the German list of occupational diseases on July 1, 2009<sup>2</sup> Added to the German list of occupational diseases on January 1, 2015<sup>3</sup> Added to the German list of occupational diseases on August 1, 2017

Table 25:

## Recognized cases of occupational disease

OD No.	2005	2010	2015	2016	2017
1101	5	5	1	2	2
1102	2	-	1	-	-
1103	24	13	22	31	26
1104	2	1	2	1	-
1105	-	-	-	-	-
1106	-	-	-	-	-
1107	-	-	-	-	-
1108	3	3	1	5	3
1109	1	2	-	-	-
1110	1	3	4	-	6
1201	102	46	12	39	10
1202	7	-	2	-	2
1301	107	152	186	191	206
1302	24	11	14	16	22
1303	35	27	4	4	3
1304	2	1	-	1	-
1305	2	-	-	-	1
1306	-	-	-	-	-
1307	1	-	-	-	-
1308	1	-	-	2	1
1309	-	-	-	-	-
1310	7	2	-	-	1
1311	-	-	-	-	-
1312	2	1	2	3	3
1313	-	-	-	-	-
1314	-	-	-	-	-
1315	35	30	38	42	32
1316	-	1	-	-	-
1317	18	8	6	11	7
1318 <sup>2</sup>	-	159	303	355	328
1319 <sup>3</sup>	-	-	1	2	6
1320 <sup>4</sup>	-	-	-	-	-
1321 <sup>4</sup>	-	-	-	-	8
2101	15	21	32	20	23
2102	277	176	228	232	246
2103	105	77	100	108	109
2104	10	15	22	22	25
2105	145	72	56	66	57
2106	18	9	16	14	12
2107	2	-	-	-	-
2108	179	392	413	443	419
2109	1	6	4	2	3
2110	12	6	5	3	9
2111	7	1	1	2	3
2112 <sup>2</sup>	-	28	200	223	235

OD No.	2005	2010	2015	2016	2017
2113 <sup>3</sup>	-	-	102	253	276
2114 <sup>3</sup>	-	-	16	29	27
2115 <sup>4</sup>	-	-	-	-	2
2201	3	1	-	-	1
2301	5,773	5,606	6,216	6,850	6,649
2401	2	-	1	1	1
2402	226	104	41	39	29
3101	644	579	696	879	996
3102	185	161	120	199	207
3103	18	1	-	-	-
3104	248	176	153	179	129
4101	1,013	1,618	698	716	589
4102	20	7	5	7	7
4103	2,178	1,749	1,995	2,183	1,947
4104 <sup>4</sup>	791	719	771	912	782
4105	904	931	951	1,031	961
4106	2	2	1	-	3
4107	1	3	-	1	1
4108	-	-	-	-	-
4109	2	5	5	5	5
4110	12	21	11	4	13
4111	336	1,095	215	239	135
4112	46	61	35	90	62
4113 <sup>2,4</sup>	-	9	12	12	17
4114 <sup>2</sup>	-	15	33	22	27
4115 <sup>2</sup>	-	10	9	8	6
4201	8	12	26	23	19
4202	-	-	1	-	1
4203	42	48	53	66	69
4301	376	312	380	357	333
4302	171	141	209	227	208
5101	877	559	578	533	515
5102	18	25	88	59	46
5103 <sup>3</sup>	-	-	1,485	3,723	3,887
6101	-	5	-	-	-
§ 9 II SGB VII	817	201	211	45	32
GDR OD <sup>1</sup>	55	17	9	7	4
<b>Total</b>	<b>15,920</b>	<b>15,461</b>	<b>16,802</b>	<b>20,539</b>	<b>19,794</b>

<sup>1</sup> Cases in acc. with GDR OD ordinance<sup>2</sup> Added to the German list of occupational diseases on July 1, 2009<sup>3</sup> Added to the German list of occupational diseases on January 1, 2015<sup>4</sup> Added to the German list of occupational diseases on August 1, 2017

Table 26:

## New occupational disease pensions

OD No.	2005	2010	2015	2016	2017
1101	1	4	-	1	1
1102	2	-	-	-	-
1103	12	12	16	24	20
1104	-	1	1	1	-
1105	-	-	-	-	-
1106	-	-	-	-	-
1107	-	-	-	-	-
1108	2	3	1	5	3
1109	-	-	-	-	-
1110	1	1	3	-	3
1201	-	-	1	-	-
1202	-	-	1	-	-
1301	99	143	177	173	172
1302	18	9	8	11	9
1303	29	23	3	2	1
1304	-	-	-	-	-
1305	-	-	-	-	-
1306	-	-	-	-	-
1307	-	-	-	-	-
1308	-	-	-	-	-
1309	-	-	-	-	-
1310	6	2	-	-	1
1311	-	-	-	-	-
1312	-	-	-	-	-
1313	-	-	-	-	-
1314	-	-	-	-	-
1315	22	13	21	24	15
1316	-	1	-	-	-
1317	17	6	5	9	4
1318 <sup>2</sup>	-	151	266	307	253
1319 <sup>3</sup>	-	-	1	-	4
1320 <sup>4</sup>	-	-	-	-	-
1321 <sup>4</sup>	-	-	-	-	3
2101	2	5	4	2	2
2102	77	57	77	84	69
2103	62	49	58	57	62
2104	8	9	17	10	22
2105	1	1	1	2	3
2106	9	2	2	5	3
2107	-	-	-	-	-
2108	118	237	254	275	259
2109	1	6	2	1	2
2110	9	4	4	2	7
2111	-	-	-	-	-
2112 <sup>2</sup>	-	13	126	148	151

OD No.	2005	2010	2015	2016	2017
2113 <sup>3</sup>	-	-	8	12	26
2114 <sup>3</sup>	-	-	6	7	11
2115 <sup>4</sup>	-	-	-	-	-
2201	-	-	-	-	-
2301	508	389	306	237	220
2401	-	-	-	1	-
2402	216	96	36	33	24
3101	180	64	54	35	38
3102	14	5	6	11	12
3103	1	-	-	-	-
3104	4	2	2	4	5
4101	271	1,203	417	423	344
4102	19	6	5	6	6
4103	427	421	541	578	517
4104 <sup>4</sup>	739	676	713	814	700
4105	851	876	875	944	861
4106	2	-	1	-	2
4107	1	3	-	1	-
4108	-	-	-	-	-
4109	2	5	4	4	4
4110	12	20	11	3	13
4111	275	906	174	183	102
4112	34	58	28	79	58
4113 <sup>2,4</sup>	-	7	12	11	16
4114 <sup>2</sup>	-	14	28	19	24
4115 <sup>2</sup>	-	6	6	4	6
4201	3	6	18	12	13
4202	-	-	1	-	1
4203	39	44	40	52	45
4301	116	95	116	97	110
4302	129	106	140	145	146
5101	263	168	169	143	136
5102	8	17	42	23	25
5103 <sup>3</sup>	-	-	173	312	396
6101	-	4	-	-	-
§ 9 II SGB VII	806	157	59	22	23
GDR OD <sup>1</sup>	43	17	9	7	3
<b>Total</b>	<b>5,459</b>	<b>6,123</b>	<b>5,049</b>	<b>5,365</b>	<b>4,956</b>

<sup>1</sup> Cases in acc. with GDR OD ordinance<sup>2</sup> Added to the German list of occupational diseases on July 1, 2009<sup>3</sup> Added to the German list of occupational diseases on January 1, 2015<sup>4</sup> Added to the German list of occupational diseases on August 1, 2017

Table 27:

Fatalities due to occupational disease <sup>5</sup>

OD No.	2005	2010	2015	2016	2017
1101	1	1	1	-	-
1102	1	-	-	-	-
1103	15	11	16	6	12
1104	-	-	-	1	1
1105	-	-	-	-	-
1106	-	-	-	-	-
1107	-	-	-	-	-
1108	4	-	1	-	-
1109	-	1	-	-	-
1110	-	-	4	1	1
1201	1	1	1	-	-
1202	-	1	-	1	-
1301	18	37	30	30	47
1302	10	4	10	7	1
1303	26	22	9	9	5
1304	-	-	-	-	-
1305	2	-	-	-	-
1306	1	-	1	-	-
1307	-	-	-	-	-
1308	-	-	-	-	-
1309	-	-	-	-	-
1310	4	4	1	1	-
1311	1	2	-	-	-
1312	-	-	-	-	-
1313	-	-	-	-	-
1314	-	1	-	-	-
1315	1	2	4	-	-
1316	-	-	-	-	-
1317	-	-	-	1	-
1318 <sup>2</sup>	2	47	129	117	114
1319 <sup>3</sup>	-	-	-	-	-
1320 <sup>4</sup>	-	-	-	-	-
1321 <sup>4</sup>	-	-	-	-	-
2101	-	-	-	-	-
2102	-	1	-	-	-
2103	1	-	-	-	-
2104	-	-	-	-	-
2105	-	-	-	-	-
2106	-	-	-	-	-
2107	-	-	-	-	-
2108	-	-	1	-	2
2109	-	-	-	-	-
2110	-	-	-	-	-
2111	-	-	-	-	-
2112 <sup>2</sup>	-	-	-	-	-

OD No.	2005	2010	2015	2016	2017
2113 <sup>3</sup>	-	-	-	-	-
2114 <sup>3</sup>	-	-	-	-	-
2115 <sup>4</sup>	-	-	-	-	-
2201	-	-	-	-	-
2301	3	1	-	-	-
2401	-	-	-	-	-
2402	194	97	67	28	32
3101	25	71	17	16	18
3102	4	4	1	-	1
3103	-	-	-	-	-
3104	4	6	-	1	2
4101	461	457	440	287	281
4102	17	6	10	2	3
4103	95	158	190	168	174
4104 <sup>4</sup>	727	691	693	622	601
4105	872	1,010	897	871	838
4106	1	1	-	1	-
4107	5	-	-	-	1
4108	-	-	-	-	1
4109	3	4	4	4	3
4110	14	22	9	9	8
4111	73	320	179	141	149
4112	49	62	59	83	91
4113 <sup>2,4</sup>	-	6	11	4	11
4114 <sup>2</sup>	-	4	12	15	17
4115 <sup>2</sup>	-	1	1	2	4
4201	7	8	2	7	7
4202	1	-	-	1	-
4203	15	23	18	27	23
4301	28	20	14	11	14
4302	32	33	31	30	38
5101	-	3	-	-	-
5102	1	-	1	-	-
5103 <sup>3</sup>	-	-	2	3	10
6101	-	-	-	-	-
§ 9 II SGB VII	141	100	47	37	45
GDR OD <sup>1</sup>	237	72	50	29	25
<b>Total</b>	<b>3,097</b>	<b>3,315</b>	<b>2,963</b>	<b>2,573</b>	<b>2,580</b>

<sup>1</sup> Cases in acc. with GDR OD ordinance<sup>2</sup> Added to the German list of occupational diseases on July 1, 2009<sup>3</sup> Added to the German list of occupational diseases on January 1, 2015<sup>4</sup> Added to the German list of occupational diseases on August 1, 2017<sup>5</sup> The number of fatalities over the period from 2005 to 2015 has been corrected.

Table 28:

**Notifications of suspected cases of occupational disease  
by sector and BG**

	2005	2010	2015	2016	2017
<b>Accident insurance in industrial sector</b>	<b>53,668</b>	<b>64,721</b>	<b>69,874</b>	<b>68,270</b>	<b>67,902</b>
101 BG for the raw materials and chemical industry	7,400	8,579	7,302	6,759	6,483
102 BG for the wood-working and metal-working industries	12,401	14,707	15,732	15,139	15,410
103 BG for the energy, textile, electrical and media products sectors	4,245	5,418	5,856	5,737	5,540
104 BG for the building trade	8,986	10,501	13,613	13,863	14,175
105 BG for the foodstuffs and catering industry	4,339	5,203	4,209	4,051	3,693
106 BG for the trade and logistics industry	2,886	3,774	4,247	4,044	3,899
107 BG for the Transport industry, postal logistics and telecommunications	1,445	1,814	1,965	1,898	1,926
108 BG for the administrative sector	2,989	4,005	4,254	4,401	4,202
109 BG for the health and welfare services	8,977	10,720	12,696	12,378	12,574
<b>Accident insurance in public sector (General AI)</b>	<b>6,094</b>	<b>5,447</b>	<b>7,030</b>	<b>7,105</b>	<b>7,171</b>
<b>Total</b>	<b>59,762</b>	<b>70,168</b>	<b>76,904</b>	<b>75,375</b>	<b>75,073</b>
<b>Pupil accident insurance</b>	<b>157</b>	<b>109</b>	<b>87</b>	<b>116</b>	<b>114</b>

Table 29:

**Recognized cases of occupational disease by sector and BG**

	2005	2010	2015	2016	2017
<b>Accident insurance in industrial sector</b>	<b>14,930</b>	<b>14,615</b>	<b>15,658</b>	<b>18,783</b>	<b>17,809</b>
101 BG for the raw materials and chemical industry	3,884	4,362	2,166	2,489	2,117
102 BG for the wood-working and metal-working industries	4,570	4,545	4,989	5,489	5,306
103 BG for the energy, textile, electrical and media products sectors	1,288	1,103	1,353	1,693	1,716
104 BG for the building trade	2,520	2,013	4,053	5,686	5,194
105 BG for the foodstuffs and catering industry	364	398	565	543	530
106 BG for the trade and logistics industry	424	361	692	645	704
107 BG for the Transport industry, postal logistics and telecommunications	216	187	265	398	339
108 BG for the administrative sector	636	701	706	828	851
109 BG for the health and welfare services	1,028	945	869	1,012	1,052
<b>Accident insurance in public sector (General AI)</b>	<b>984</b>	<b>839</b>	<b>1,135</b>	<b>1,730</b>	<b>1,945</b>
<b>Total <sup>1</sup></b>	<b>15,914</b>	<b>15,454</b>	<b>16,793</b>	<b>20,513</b>	<b>19,754</b>
<b>Pupil accident insurance</b>	<b>6</b>	<b>7</b>	<b>9</b>	<b>26</b>	<b>40</b>

<sup>1</sup>The increase in 2016 is partly due to new occupational diseases, which were added on January 1, 2015.

Table 30:

**New occupational disease pensions by sector and BG**

	2005	2010	2015	2016	2017
<b>Accident insurance in industrial sector</b>	<b>5,210</b>	<b>5,946</b>	<b>4,813</b>	<b>5,086</b>	<b>4,664</b>
101 BG for the raw materials and chemical industry	2,119	2,907	1,078	1,170	896
102 BG for the wood-working and metal-working industries	1,173	1,284	1,338	1,387	1,337
103 BG for the energy, textile, electrical and media products sectors	444	433	501	516	468
104 BG for the building trade	667	584	1,044	1,245	1,138
105 BG for the foodstuffs and catering industry	105	88	133	117	125
106 BG for the trade and logistics industry	179	136	250	198	239
107 BG for the Transport industry, postal logistics and telecommunications	65	69	90	90	79
108 BG for the administrative sector	164	198	186	174	179
109 BG for the health and welfare services	294	247	193	189	203
<b>Accident insurance in public sector (General AI)</b>	<b>249</b>	<b>176</b>	<b>234</b>	<b>277</b>	<b>291</b>
<b>Total</b>	<b>5,459</b>	<b>6,122</b>	<b>5,047</b>	<b>5,363</b>	<b>4,955</b>
<b>Pupil accident insurance</b>	-	1	2	2	1

Table 31:

**Long-term trends of occupational disease: notifications of suspected cases, recognized cases, new pensions**

Year	Suspected cases	Recognized cases	
		Total	<i>Of which new pensions</i>
1987	45,781	7,666	3,577
1988	49,985	7,726	3,889
1989	52,788	9,448	4,207
1990	56,231	9,771	4,251
1991 <sup>1</sup>	66,726	10,952	4,833
1992 <sup>1</sup>	81,920	12,849	5,553
1993 <sup>1</sup>	101,851	18,635	5,984
1994	93,296	20,318	6,835
1995	87,431	22,938	7,135
1996	90,304	23,212	7,536
1997	85,406	22,577	7,469
1998	82,376	19,976	6,072
1999	80,282	18,633	5,693
2000	78,029	18,000	5,304
2001	73,551	17,950	5,503
2002	68,196	17,722	5,443
2003	62,130	16,778	5,085
2004	60,965	16,784	5,021
2005	59,919	15,920	5,459
2006	61,457	14,156	4,781
2007	61,150	13,383	4,123
2008	60,736	12,972	4,312
2009	66,951	16,078	6,643
2010	70,277	15,461	6,123
2011	71,269	15,262	5,407
2012	70,566	15,291	4,924
2013	71,579	15,656	4,815
2014	71,685	16,112	5,155
2015	76,991	16,802	5,049
2016 <sup>2</sup>	75,491	20,539	5,365
2017	75,187	19,794	4,956

<sup>1</sup> See note on p. 7 for interpretation<sup>2</sup> The increase is partly due to new occupational diseases, which were added on January 1, 2015.

Figure 11:  
**Notifications of suspected cases of occupational disease**

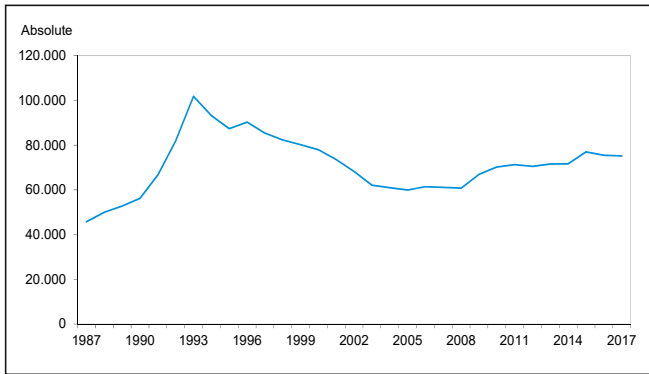
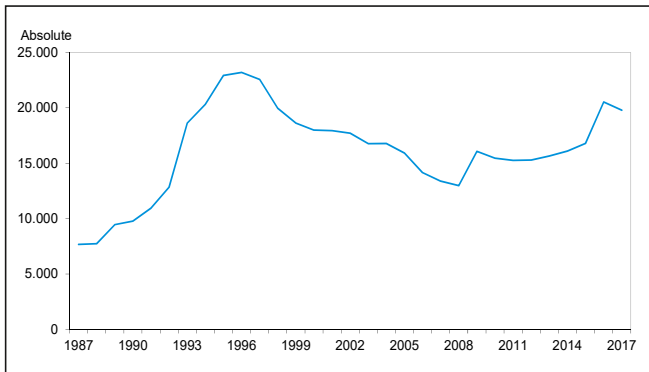
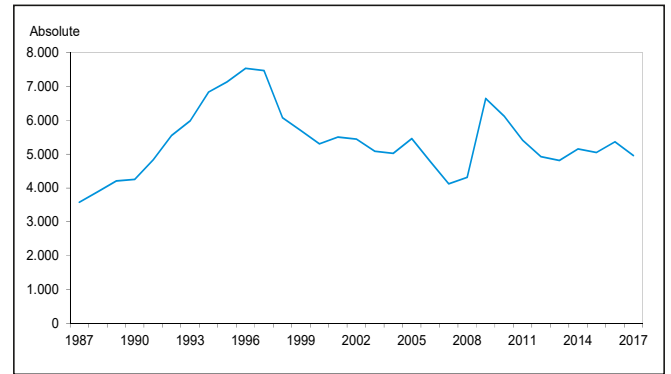


Figure 12:  
**Recognized cases of occupational disease**



\* 2009: The omission of the retroactive effect clause (verdict of the Federal Social Court, 2008-12-02) caused a recognition of old cases (OD 4111). Simultaneously, the revised recommendation for medical expertise of slight silicosis (OD 4101) resulted in an increase in the number of cases. At the present time the impact of these changes comes to an end. Simultaneously, the revised recommendation for medical expertise of slight silicosis (OD 4101) resulted in an increase in the number of cases. At the present time the impact of these changes comes to an end.

Figure 13:  
**New occupational disease pensions\***



\* see note on p. 7 for interpretation

\*\* 2009: The omission of the retroactive effect clause (verdict of the Federal Social Court, 2008-12-02) caused a recognition of old cases (OD 4111). Simultaneously, the revised recommendation for medical expertise of slight silicosis (OD 4101) resulted in an increase in the number of cases. At the present time the impact of these changes comes to an end. Simultaneously, the revised recommendation for medical expertise of slight silicosis (OD 4101) resulted in an increase in the number of cases. At the present time the impact of these changes comes to an end.

Table 32:

**Stock of pensions**

Year	Pension paid to				Total
	Insured person	Widows and widowers	Orphans	Other claimants	
1987	628,383	121,490	29,320	379	779,572
1988	628,541	119,154	26,913	349	774,957
1989	627,731	116,789	25,001	334	769,855
1990	630,621	114,674	22,879	303	768,477
1991	858,572	133,477	23,608	291	1,015,948
1992	858,750	131,561	24,335	263	1,014,909
1993	859,116	131,625	24,027	231	1,014,999
1994	862,688	131,249	23,537	212	1,017,686
1995	865,545	130,343	22,815	206	1,018,909
1996	863,337	129,043	22,248	211	1,014,839
1997	857,590	127,233	21,580	188	1,006,591
1998	856,651	125,827	21,020	164	1,003,662
1999	852,802	124,379	20,464	138	997,783
2000	847,884	123,530	20,292	127	991,833
2001	841,228	121,552	19,985	113	982,878
2002	833,141	120,073	19,668	108	972,990
2003	826,093	118,791	19,302	105	964,291
2004	816,869	117,510	18,774	95	953,248
2005	806,707	115,977	18,236	87	941,007
2006	797,457	114,971	17,243	72	929,743
2007	789,655	113,509	16,585	71	919,820
2008	775,750	112,081	15,281	55	903,167
2009	767,350	110,883	14,902	42	893,177
2010	758,374	109,023	13,837	34	881,268
2011	747,685	107,698	12,894	31	868,308
2012	737,675	105,540	12,415	34	855,664
2013	727,162	103,861	11,845	31	842,899
2014	716,345	102,650	10,636	30	829,661
2015	704,858	100,717	10,174	29	815,778
2016	694,836	99,038	9,562	26	803,462
2017	683,552	97,024	8,740	22	789,338

Figure 14:  
**Total pensions paid at end of 2017**

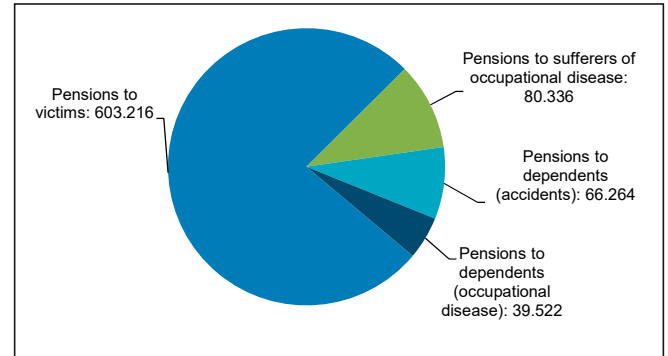


Figure 15:  
**Total pensions**

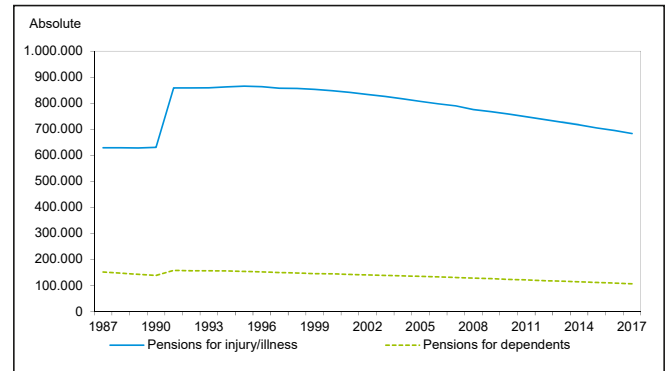




Table 33:

**Remuneration<sup>1,2</sup> level used as basis for calculating contribution in industrial sector**

Year	Remuneration in 1,000 €	Change on previous year in %	Per full time equivalent employee in €	Change on previous year in %
1950	13,743,759		1,248	
1955	29,542,357		1,909	
1960	49,103,621		2,750	
1965	86,878,914		4,434	
1970	133,665,175		6,816	
1975	203,497,493		10,567	
1980	292,067,305		14,470	
1985	338,449,183		16,637	
1990	447,047,574		17,331	
1995	611,448,202		19,973	
1996	617,992,226	+ 1.1	19,585	- 1.9
1997	615,739,163	- 0.4	19,774	+ 1.0
1998	626,611,168	+ 1.8	20,412	+ 3.2
1999	640,712,098	+ 2.3	20,746	+ 1.6
2000	658,312,472	+ 2.7	21,162	+ 2.0
2001	678,574,072	+ 3.1	21,892	+ 3.5
2002	684,249,845	+ 0.8	22,332	+ 2.0
2003	680,553,079	- 0.5	22,741	+ 1.8
2004	677,933,555	- 0.4	22,256	- 2.1
2005	675,686,431	- 0.3	22,746	+ 2.2
2006	690,026,919	+ 2.1	22,648	- 0.4
2007	714,839,359	+ 3.6	23,057	+ 1.8
2008	744,492,926	+ 4.1	23,659	+ 2.6
2009	732,313,240	- 1.6	23,205	- 1.9
2010	753,019,262	+ 2.8	23,496	+ 1.3
2011	793,438,514	+ 5.4	24,347	+ 3.6
2012	827,024,240	+ 4.2	24,982	+ 2.6
2013	852,287,644	+ 3.1	25,119	+ 0.5
2014	887,562,419	+ 4.1	26,049	+ 3.7
2015	921,721,717	+ 3.8	26,790	+ 2.8
2016	956,791,849	+ 3.8	27,380	+ 2.2
2017	995,473,298	+ 4.0	27,643	+ 1.0

<sup>1</sup> Not available in public sector accident insurance

<sup>2</sup> Since 2001: includes data of German Social Accident Insurance Institution for the postal logistics and telecommunications

Table 34a:

**Apportionment quota<sup>1,2</sup> required of companies in industrial sector**

Year	Quota in 1,000 €	Change on previous year in %	Per full time equivalent employee in €	Per 100 € wages
1950	231,668		21	1.69
1955	434,371		28	1.47
1960	742,536		41	1.51
1965	1,366,311		70	1.57
1970	1,845,919		92	1.38
1975	3,048,397		167	1.50
1980	4,264,054		211	1.46
1985	4,731,429		233	1.40
1990	6,099,372		236	1.36
1995	8,949,088		292	1.46
1996	8,789,788	- 1.8	279	1.42
1997	8,660,458	- 1.5	278	1.41
1998	8,549,261	- 1.3	278	1.36
1999	8,551,909	+ 0.0	277	1.33
2000	8,689,938	+ 1.6	279	1.32
2001	8,806,317	+ 1.3	284	1.30
2002	9,029,194	+ 2.5	298	1.32
2003	9,129,191	+ 1.1	305	1.34
2004	8,979,936	- 1.6	295	1.32
2005	8,814,110	- 1.8	297	1.30
2006	9,006,414	+ 2.2	296	1.31
2007	9,060,882	+ 0.6	292	1.27
2008	9,300,459	+ 2.6	296	1.25
2009	9,507,172	+ 2.2	301	1.30
2010	9,858,685	+ 3.7	308	1.31
2011	10,352,705	+ 5.0	318	1.30
2012	10,646,147	+ 2.8	322	1.29
2013	10,588,205	- 0.5	312	1.24
2014	10,736,669	+ 1.4	315	1.21
2015	10,905,393	+ 1.6	317	1.18
2016	11,247,447	+ 3.1	322	1.18
2017	11,558,916	+ 2.8	321	1.16

<sup>1</sup> Not available in public sector accident insurance

<sup>2</sup> Since 1996: includes data of German Social Accident Insurance Institution for the postal logistics and telecommunications

Table 34b:

**Contribution quota required of municipalities and affiliated companies in public sector<sup>1,2</sup>**

Year	Quota in 1,000 €	Change on previous year in %	Per full time equivalent employee / pupil in €
1987	351,008		
1988	364,686	+ 3.9	
1989	372,726	+ 2.2	
1990	378,831	+ 1.6	
1991	458,754	+ 21.1	
1992	487,228	+ 6.2	
1993	538,079	+ 10.4	
1994	653,066	+ 21.4	
1995	682,375	+ 4.5	
1996	706,762	+ 3.6	
1997	708,798	+ 0.3	
1998	1,006,851	+ 42.1	
1999	1,004,412	- 0.2	
2000	1,012,373	+ 0.8	
2001	1,041,489	+ 2.9	
2002	1,037,487	- 0.4	
2003	1,056,611	+ 1.8	48
2004	1,103,352	+ 4.4	50
2005	1,126,662	+ 2.1	51
2006	1,132,761	+ 0.5	51
2007	1,175,990	+ 3.8	53
2008	1,172,302	- 0.3	54
2009	1,179,640	+ 0.6	54
2010	1,195,338	+ 1.3	54
2011	1,226,519	+ 2.6	56
2012	1,273,403	+ 3.8	58
2013	1,321,968	+ 3.8	60
2014	1,380,517	+ 4.4	62
2015	1,428,361	+ 3.5	64
2016	1,482,972	+ 3.8	66
2017	1,550,108	+ 4.5	68

<sup>1</sup> Without "Eigenunfallversicherungsträger" and "Ausführungsbehörden" which has been transformed and merged into "Unfallkassen" and "Gemeindeunfallversicherungsverbände" in 1997 and 2002

<sup>2</sup> Excluding data of German Social Accident Insurance Institution for the postal logistics and telecommunications

Table 35:

**Expenditure on compensation**

Year	Expenditure in 1,000 €	Change on previous year in %	Per full time equivalent employee <sup>1</sup> in €	Per 100 € wages <sup>2</sup>
1987	4,835,155	+ 2.5	174	1.15
1988	4,957,251	+ 2.5	175	1.12
1989	5,095,538	+ 2.8	176	1.10
1990	5,332,148	+ 4.6	178	1.06
1991	6,100,203	+ 14.4	169	1.03
1992	6,971,782	+ 14.3	191	1.08
1993	7,512,386	+ 7.8	207	1.13
1994	7,913,121	+ 5.3	219	1.17
1995	8,156,909	+ 3.1	221	1.16
1996	8,218,445	+ 0.8	217	1.16
1997	8,402,756	+ 2.2	224	1.19
1998	8,450,296	+ 0.6	228	1.17
1999	8,509,577	+ 0.7	228	1.15
2000	8,542,477	+ 0.4	229	1.13
2001	8,599,249	+ 0.7	232	1.10
2002	8,789,492	+ 2.2	242	1.12
2003	8,806,638	+ 0.2	245	1.12
2004	8,764,535	- 0.5	239	1.12
2005	8,675,926	- 1.0	240	1.11
2006	8,666,241	- 0.1	235	1.09
2007	8,575,052	- 1.1	228	1.04
2008	8,727,941	+ 1.8	229	1.01
2009	9,026,984	+ 3.4	236	1.07
2010 <sup>3</sup>	9,304,088	+ 3.1	240	1.07
2011	9,369,686	+ 0.7	238	1.02
2012	9,460,441	+ 1.0	237	0.99
2013	9,597,733	+ 1.5	235	0.97
2014	9,769,448	+ 1.8	237	0.95
2015	9,943,043	+ 1.8	240	0.93
2016	10,258,348	+ 3.2	243	0.92
2017	10,472,263	+ 2.1	241	0.91

<sup>1</sup> Industrial and public sector without pupil accident insurance

<sup>2</sup> Industrial sector

<sup>3</sup> Modifications of the account system from the year under review 2010; | comparisons with previous year only partly possible; e.g. financial compensation incl. new account 589 "payments vor accident investigations", formerly part of procedural costs.

Table 36:

## Expenditure on curative treatment

Year	In 1,000 €		Change on previous year in %	
	Total	Of which injury benefit <sup>1</sup>	Total	Injury benefit <sup>1</sup>
1987	1,346,814	343,847		
1988	1,377,709	353,403	+ 2.3	+ 2.8
1989	1,435,727	354,265	+ 4.2	+ 0.2
1990	1,559,341	384,336	+ 8.6	+ 8.5
1991	1,821,739	453,971	+ 16.8	+ 18.1
1992	2,213,892	527,853	+ 21.5	+ 16.3
1993	2,393,196	559,648	+ 8.1	+ 6.0
1994	2,511,911	564,198	+ 5.0	+ 0.8
1995	2,620,197	568,801	+ 4.3	+ 0.8
1996	2,609,508	573,878	- 0.4	+ 0.9
1997	2,664,089	550,455	+ 2.1	- 4.1
1998	2,715,191	550,523	+ 1.9	+ 0.0
1999	2,788,545	557,884	+ 2.7	+ 1.3
2000	2,817,784	562,303	+ 1.0	+ 0.8
2001	2,832,271	577,124	+ 0.5	+ 2.6
2002	2,915,904	606,495	+ 3.0	+ 5.1
2003	2,860,311	549,884	- 1.9	- 9.3
2004	2,854,926	506,762	- 0.2	- 7.8
2005	2,861,599	484,486	+ 0.2	- 4.4
2006	2,950,789	486,559	+ 3.1	+ 0.4
2007	2,955,801	484,155	+ 0.2	- 0.5
2008	3,114,170	515,200	+ 5.4	+ 6.4
2009	3,284,596	556,700	+ 5.5	+ 8.1
2010	3,496,863	583,781	+ 6.5	+ 4.9
2011	3,610,276	602,100	+ 3.2	+ 3.1
2012	3,677,790	602,522	+ 1.9	+ 0.1
2013	3,813,642	640,067	+ 3.7	+ 6.2
2014	3,965,957	658,769	+ 4.0	+ 2.9
2015	4,084,241	680,664	+ 3.0	+ 3.3
2016	4,278,674	711,832	+ 4.8	+ 4.6
2017	4,416,796	736,903	+ 3.2	+ 3.5

<sup>1</sup> Including special assistance

Table 37:

Expenditure on pensions <sup>1</sup> in 1,000 €

Year	Expenditure on pensions for				Total
	Insured persons	Widows and widowers	Orphans	Other claimants	
1987	2,193,008	972,154	137,688	1,709	3,304,559
1988	2,253,480	986,812	131,733	1,409	3,373,435
1989	2,311,109	999,017	124,108	1,511	3,435,745
1990	2,377,190	1,010,688	117,979	1,249	3,507,106
1991	2,794,398	1,064,968	118,982	1,314	3,979,661
1992	3,128,234	1,155,033	126,824	1,256	4,411,347
1993	3,372,782	1,216,886	135,872	1,168	4,726,709
1994	3,573,341	1,266,218	139,105	1,151	4,979,815
1995	3,680,098	1,286,027	139,241	1,303	5,106,669
1996	3,742,889	1,291,736	137,000	1,042	5,172,667
1997	3,809,192	1,293,131	134,738	900	5,237,961
1998	3,820,465	1,291,114	132,253	828	5,244,659
1999	3,849,370	1,286,826	129,547	761	5,266,505
2000	3,863,449	1,287,180	127,730	711	5,279,071
2001	3,914,986	1,297,226	126,509	651	5,339,372
2002	3,982,916	1,316,549	125,612	695	5,425,771
2003	4,017,914	1,323,577	124,940	593	5,467,024
2004	4,006,454	1,320,115	122,916	567	5,450,052
2005	3,987,306	1,310,681	117,813	534	5,416,334
2006	3,941,354	1,310,888	113,746	445	5,366,433
2007	3,897,356	1,296,209	110,953	384	5,304,903
2008	3,894,222	1,300,728	107,767	365	5,303,082
2009	3,994,375	1,335,211	102,801	278	5,432,666
2010	3,993,057	1,331,476	98,556	265	5,423,355
2011	3,954,730	1,322,278	92,666	211	5,369,884
2012	3,975,382	1,328,316	89,732	218	5,393,648
2013	3,980,744	1,330,928	85,001	191	5,396,863
2014	4,005,807	1,332,015	79,756	185	5,417,763
2015	4,039,730	1,339,334	77,455	243	5,456,762
2016	4,131,929	1,369,162	74,980	166	5,576,236
2017	4,194,114	1,388,385	71,899	143	5,654,540

<sup>1</sup> Excluding lump-sum payments and allowances

Table 38:

## Expenditure on pensions in € per case

Year	Expenditure on pensions for			
	Insured persons	Widows and widowers	Orphans	Other claimants
1987	3,490	8,002	4,696	4,510
1988	3,585	8,282	4,895	4,038
1989	3,682	8,554	4,964	4,525
1990	3,770	8,814	5,157	4,121
1991	3,255	7,979	5,040	4,516
1992	3,643	8,779	5,212	4,775
1993	3,926	9,245	5,655	5,059
1994	4,142	9,647	5,910	5,431
1995	4,252	9,866	6,103	6,329
1996	4,335	10,010	6,158	4,936
1997	4,442	10,163	6,244	4,788
1998	4,460	10,261	6,292	5,049
1999	4,514	10,346	6,331	5,514
2000	4,557	10,420	6,295	5,598
2001	4,654	10,672	6,330	5,762
2002	4,781	10,965	6,387	6,434
2003	4,864	11,142	6,473	5,651
2004	4,905	11,234	6,547	5,969
2005	4,943	11,301	6,460	6,141
2006	4,942	11,402	6,597	6,179
2007	4,936	11,419	6,690	5,402
2008	5,020	11,605	7,052	6,640
2009	5,205	12,042	6,899	6,610
2010	5,265	12,213	7,123	7,805
2011	5,289	12,278	7,187	6,815
2012	5,389	12,586	7,228	6,406
2013	5,474	12,815	7,176	6,147
2014	5,592	12,976	7,499	6,176
2015	5,731	13,298	7,613	8,383
2016	5,947	13,825	7,841	6,368
2017	6,136	14,310	8,226	6,506

Table 39:

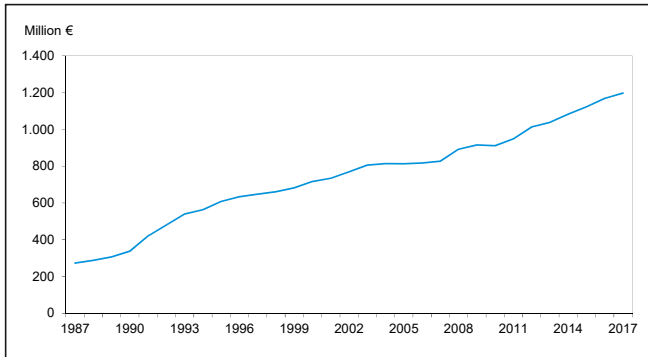
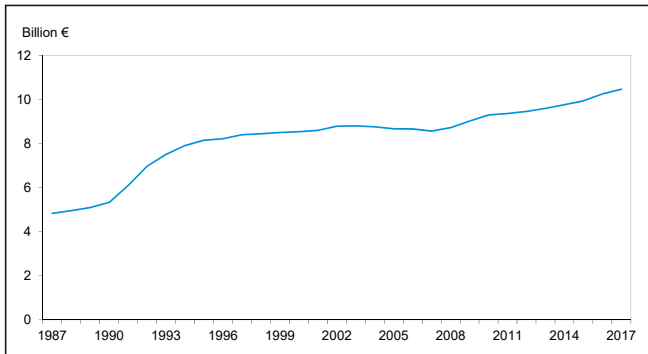
## Expenditure on prevention in € 1,000

Year	Total	Of which for			
		Accident prevention regulations, publications, etc.	Personnel and material costs of prevention <sup>1</sup>	Services for occupational health and for safety of operation, first aid <sup>2</sup>	Training
1987	272,986	3,414	151,579	30,367	39,870
1988	287,826	3,617	160,679	32,168	40,882
1989	306,906	4,374	171,555	32,994	44,136
1990	337,696	5,164	188,894	34,025	47,525
1991	420,873	8,413	239,713	46,137	56,112
1992	480,361	6,461	271,343	55,555	66,685
1993	540,047	9,030	299,350	68,774	76,590
1994	563,483	7,352	321,515	72,690	78,877
1995	608,301	8,274	341,782	79,657	89,069
1996	633,617	7,496	349,242	86,477	92,269
1997	647,689	8,569	361,496	82,155	98,351
1998	660,549	7,504	372,412	79,222	99,414
1999	681,996	7,476	382,873	85,564	101,427
2000	716,525	6,689	412,802	83,756	104,241
2001	733,981	6,000	418,208	82,236	110,899
2002	769,717	5,349	432,477	85,965	122,551
2003	805,869	4,788	451,340	88,409	130,153
2004	813,308	4,453	458,435	87,476	130,070
2005	812,560	3,775	461,336	84,488	132,747
2006	816,908	3,340	467,937	81,696	134,589
2007	827,386	3,463	475,254	81,146	136,315
2008	892,268	3,264	518,940	88,560	135,590
2009	915,130	3,229	536,523	93,728	137,645
2010	911,435	3,074	534,342	94,944	118,150
2011	948,225	2,703	557,192	98,386	123,211
2012	1,013,342	2,264	587,129	102,892	121,803
2013	1,037,824	1,921	604,426	111,610	128,326
2014	1,083,191	1,817	624,137	119,076	133,496
2015	1,122,624	1,975	632,102	131,527	138,232
2016	1,168,921	1,810	652,527	145,589	140,605
2017	1,197,670	1,731	672,946	142,639	140,114

<sup>1</sup> Denotation in the account system before the year under review 2010 "Advice to business and inspections"

<sup>2</sup> Separate data as from 1997 only

Table 40:

**Staff in the section of prevention in 2017**Figure 16:  
**Expenditure on prevention**Figure 17:  
**Expenditure on compensation**

\* Modifications of the account system from the year under review 2010; comparisons with last year only partly possible. Incl. new account 'payments for accident investigations', formerly part of procedural costs.

	Labour inspectors	Other prevention experts	Occupational physicians, scientific staff	Administrative staff	Total
<b>Accident insurance in industrial sector</b>	<b>1,921</b>	<b>476</b>	<b>681</b>	<b>1,380</b>	<b>4,458</b>
101 BG for the raw materials and chemical industry	168	45	82	229	524
102 BG for the wood-working and metal-working industries	451	210	70	348	1,079
103 BG for the energy, textile, electrical and media products sectors	216	76	113	83	488
104 BG for the building trade	444	21	139	154	758
105 BG for the foodstuffs and catering industry	112	22	74	118	326
106 BG for the trade and logistics industry	152	34	41	93	320
107 BG for the Transport industry, postal logistics and telecommunications	123	5	48	59	235
108 BG for the administrative sector	171	7	43	197	418
109 BG for the health and welfare services	84	56	71	99	310
<b>Accident insurance in public sector (General AI)</b>	<b>406</b>	<b>24</b>	<b>39</b>	<b>178</b>	<b>647</b>
<b>Total</b>	<b>2,327</b>	<b>500</b>	<b>720</b>	<b>1,558</b>	<b>5,105</b>

Table 41:

## Selected activities in the section of prevention in 2017

	Inspected companies <sup>1</sup> / educational institutions <sup>2</sup>	Inspections in the companies <sup>1</sup> / educational institutions <sup>2</sup>	Safety deficiencies found	Investigated accidents
<b>Accident insurance in industrial sector</b>	<b>215,835</b>	<b>456,002</b>	<b>990,380</b>	<b>29,355</b>
101 BG for the raw materials and chemical industry	9,153	11,568	17,624	3,473
102 BG for the wood-working and metal-working industries	57,388	90,067	99,404	5,864
103 BG for the energy, textile, electrical and media products sectors	21,871	36,895	19,675	3,708
104 BG for the building trade	51,534	197,910	585,264	2,974
105 BG for the foodstuffs and catering industry	22,723	25,986	84,463	5,623
106 BG for the trade and logistics industry	29,332	56,422	124,874	5,041
107 BG for the Transport industry, postal logistics and telecommunications	13,078	13,388	13,132	675
108 BG for the administrative sector	5,993	15,770	14,928	1,317
109 BG for the health and welfare services	4,763	7,996	31,016	680
<b>Accident insurance in public sector</b>	<b>4,640</b>	<b>8,447</b>	<b>26,868</b>	<b>3,611</b>
<b>Total</b>	<b>220,475</b>	<b>464,449</b>	<b>1,017,248</b>	<b>32,966</b>

<sup>1</sup> Including assistance companies<sup>2</sup> The inspected companies and inspections in the public sector include the educational institutions of the pupil accident insurance

Table 42:

## Consulting initiated by companies and insured persons 2017

	On-site consultation		Consultation by telephone or in writing <sup>1</sup>	
	Occupational safety	Health protection	Occupational safety	Health protection
<b>Accident insurance in industrial sector</b>	<b>109,048</b>	<b>48,087</b>	<b>197,263</b>	<b>136,963</b>
101 BG for the raw materials and chemical industry	1,328	531	3,982	1,239
102 BG for the wood-working and metal-working industries	3,806	1,555	1,010	309
103 BG for the energy, textile, electrical and media products sectors	50,540	16,259	66,440	56,771
104 BG for the building trade	3,621	1,627	24,138	10,844
105 BG for the foodstuffs and catering industry	971	207	11,986	7,324
106 BG for the trade and logistics industry	12,154	2,908	4,855	1,886
107 BG for the Transport industry, postal logistics and telecommunications	9,074	6,257	33,376	5,015
108 BG for the administrative sector	20,895	13,930	256	171
109 BG for the health and welfare services	6,659	4,813	51,220	53,404
<b>Accident insurance in public sector</b>	<b>17,727</b>	<b>6,597</b>	<b>86,168</b>	<b>30,194</b>
<b>Total</b>	<b>126,775</b>	<b>54,684</b>	<b>283,431</b>	<b>167,157</b>

<sup>1</sup> Including consulting outside the permanent establishment

Table 43:

### Occupational health and safety training seminars by target groups in 2017

	Target groups					Total number of courses
	Safety officers	OSH professionals	Employers and managers	Company medical officers	Other company staff <sup>1</sup>	
<b>Accident insurance in industrial sector</b>	<b>3,774</b>	<b>880</b>	<b>2,764</b>	<b>4</b>	<b>166,623</b>	<b>174,045</b>
101 BG for the raw materials and chemical industry	277	68	203	1	1,107	1,656
102 BG for the wood-working and metal-working industries	748	144	1,281	1	48,474	50,648
103 BG for the energy, textile, electrical and media products sectors	418	154	128	-	16,097	16,797
104 BG for the building trade	197	111	519	-	14,477	15,304
105 BG for the foodstuffs and catering industry	170	59	110	-	4,875	5,214
106 BG for the trade and logistics industry	492	122	150	-	25,151	25,915
107 BG for the Transport industry, postal logistics and telecommunications	173	19	50	2	8,093	8,337
108 BG for the administrative sector	711	170	199	-	16,534	17,614
109 BG for the health and welfare services	588	33	124	-	31,815	32,560
<b>Accident insurance in public sector</b>	<b>848</b>	<b>200</b>	<b>1,012</b>	<b>23</b>	<b>23,233</b>	<b>25,316</b>
<b>Total</b>	<b>4,622</b>	<b>1,080</b>	<b>3,776</b>	<b>27</b>	<b>189,856</b>	<b>199,361</b>

<sup>1</sup> Including first aid training

Table 44:

### Persons attending OSH training by target groups in 2017

	Target groups					Total number of courses
	Safety officers	OSH professionals	Employers and managers	Company medical officers	Other company staff <sup>1</sup>	
<b>Accident insurance in industrial sector</b>	<b>72,458</b>	<b>17,914</b>	<b>43,683</b>	<b>397</b>	<b>1,780,810</b>	<b>1,915,262</b>
101 BG for the raw materials and chemical industry	5,752	1,917	2,818	108	20,065	30,660
102 BG for the wood-working and metal-working industries	15,074	3,284	18,871	269	296,852	334,350
103 BG for the energy, textile, electrical and media products sectors	7,845	2,853	2,492	-	249,823	263,013
104 BG for the building trade	3,157	1,950	8,900	-	160,089	174,096
105 BG for the foodstuffs and catering industry	3,197	1,311	2,223	-	78,094	84,825
106 BG for the trade and logistics industry	10,604	1,716	2,513	-	215,333	230,166
107 BG for the Transport industry, postal logistics and telecommunications	2,904	400	604	20	33,715	37,643
108 BG for the administrative sector	13,087	3,941	3,427	-	249,238	269,693
109 BG for the health and welfare services	10,838	542	1,835	-	477,601	490,816
<b>Accident insurance in public sector</b>	<b>17,485</b>	<b>2,070</b>	<b>20,218</b>	<b>231</b>	<b>359,743</b>	<b>399,747</b>
<b>Total</b>	<b>89,943</b>	<b>19,984</b>	<b>63,901</b>	<b>628</b>	<b>2,140,553</b>	<b>2,315,009</b>

<sup>1</sup> Including first aiders

Table 45:

**Staff with responsibility for safety at work in 2017**

	Safety officers	OSH professionals <sup>1</sup>
<b>Accident insurance in industrial sector</b>	<b>506,852</b>	<b>79,986</b>
101 BG for the raw materials and chemical industry	66,632	6,320
102 BG for the wood-working and metalworking industries	80,060	17,816
103 BG for the energy, textile, electrical and media products sectors	50,972	11,152
104 BG for the building trade	23,332	6,940
105 BG for the foodstuffs and catering industry	25,707	3,609
106 BG for the trade and logistics industry	37,565	8,155
107 BG for the Transport industry, postal logistics and telecommunications	29,900	1,040
108 BG for the administrative sector	57,909	10,342
109 BG for the health and welfare services	134,775	14,612
<b>Accident insurance in public sector</b>	<b>164,006</b>	<b>4,824</b>
<b>Total</b>	<b>670,858</b>	<b>84,810</b>

<sup>1</sup> Not available in pupil accident insurance



**Deutsche Gesetzliche  
Unfallversicherung e.V. (DGUV)**

Glinkastraße 40

10117 Berlin, Germany

Phone: +49 30 13001-0 (central office)

Fax: +49 30 13001-6132

E-Mail: [info@dguv.de](mailto:info@dguv.de)

Internet: [www.dguv.de/en](http://www.dguv.de/en)