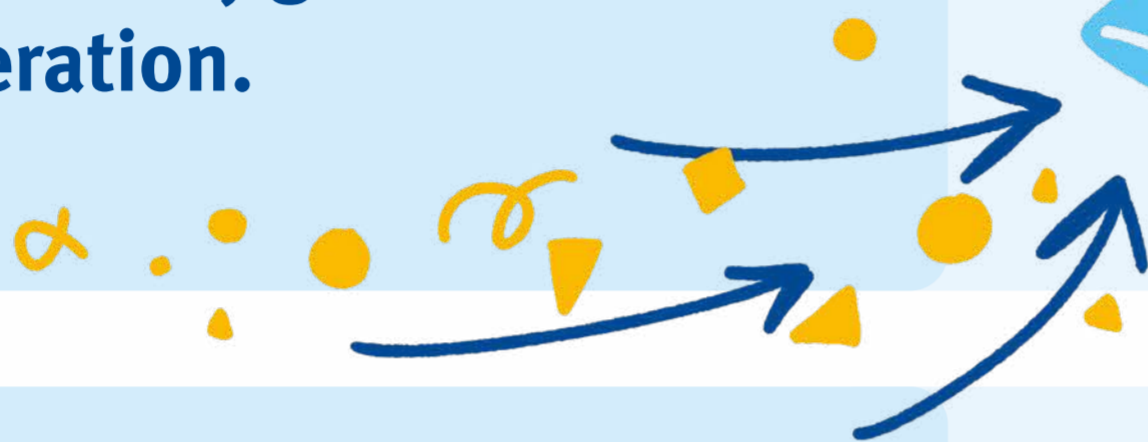
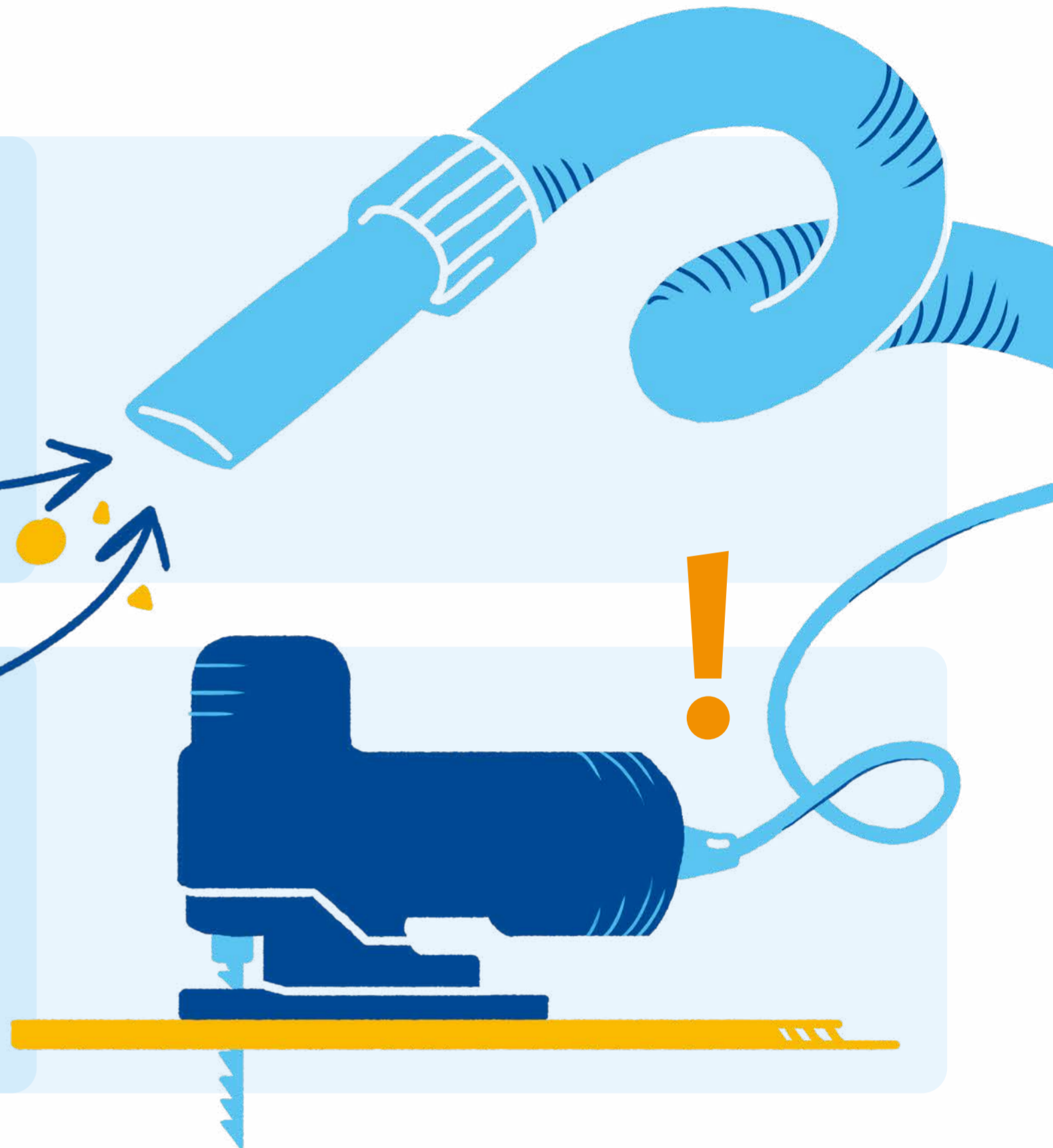


# Sawing Safely

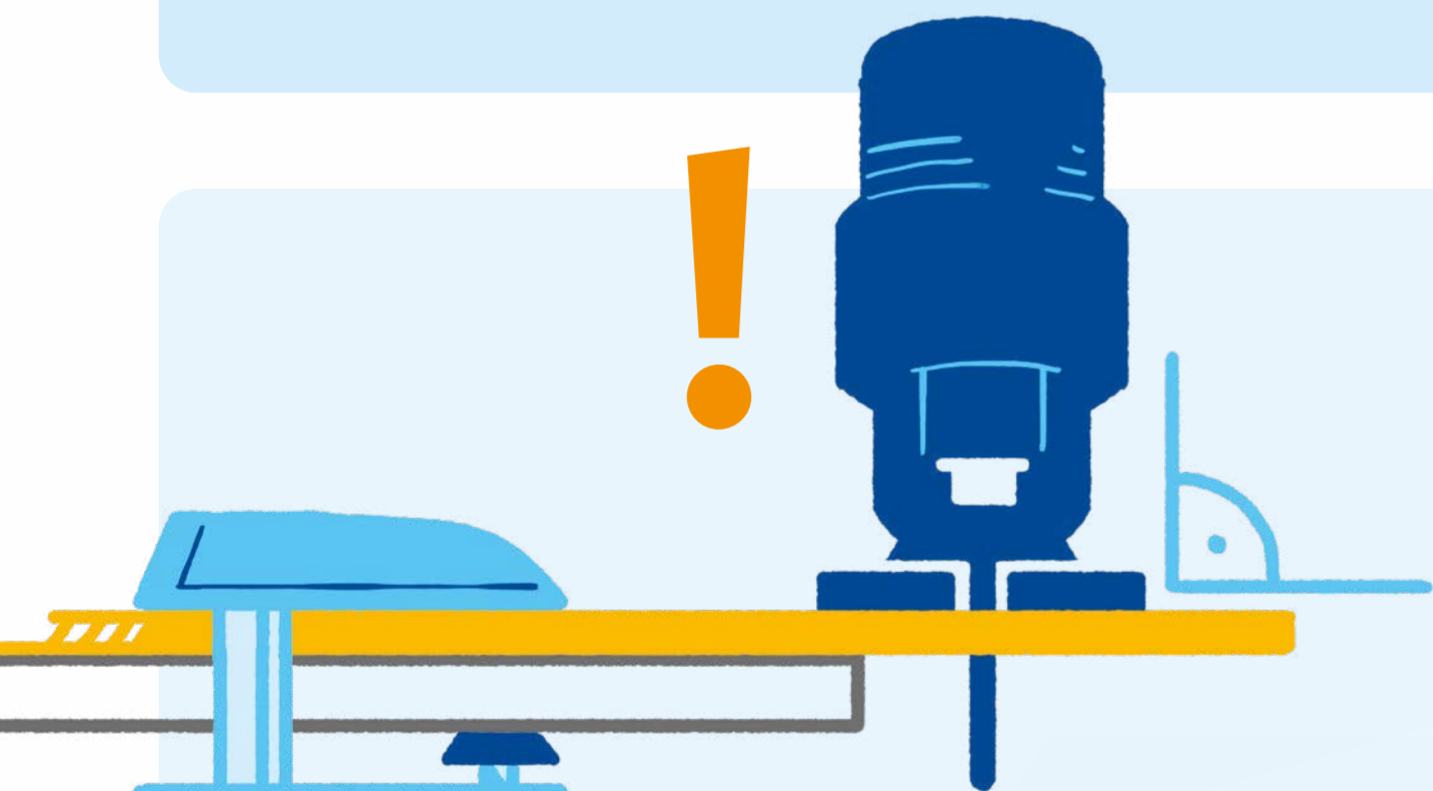
Remove sawdust **with a vacuum** when the jigsaw is not in operation.



Route the **cable** over your **shoulder**, leaving ample space for the saw blade.



**Securely clamp the workpiece in place.** Only switch on the jigsaw when it's **firmly in place**, and the **saw blade is not jammed.**



Keep your hands **away from the jigsaw.** Risk of injury!

